

\$1,000
AFFILIATE GRANT
See page 5



WHERE WILL YOUR MAJOR TAKE YOU?

**Australia | China | Costa Rica | England | France | Ireland | Italy | Japan
Kenya | Peru | Russia | Scotland | Spain | Thailand | United Arab Emirates**

WELCOME TO KEI

We are here to help!



www.KEIabroad.org



1.800.831.5095
1.212.931.9953



info@KEIabroad.org



48 Broadway, Suite 2
Haverstraw, NY 10927



youtube.com/@keiabroad3420



facebook.com/KEIabroad



twitter.com/KEIabroad

See program pages for information about KEI
Onsite Directors and program support staff.



Eduard Mandell
Managing Director
eduard@KEIabroad.org



Alcidean Arias
Associate Director
alci@KEIabroad.org



Monique Ramirez
Program Specialist
monique@KEIabroad.org



Duleep Deosthale
Chair, Academic Board
duleep@KEIabroad.org



Sol Kodsí
Policy Lead
sol@KEIabroad.org



Damiano Cuneo
Program Specialist
damiano@KEIabroad.org

THE KEI DIFFERENCE	1
YOUR JOURNEY WITH KEI	3
HEALTH & SAFETY	4
FEES & FINANCIAL AID	5
ACADEMICS	6
COURSES & INTERSHIPS	7
AUSTRALIA: GOLD COAST & BRISBANE	8
Arts: Design, Architecture, Visual & Performance	
Australian Studies & Foreign Languages	
Aviation Management	
Business & Economics	
Communications: Journalism, Media & Advertising	
Computer Science & Information Systems	
Criminology, Forensics & Law	
Education & Child Development	
Engineering & Applied Science	
Environment: Science, Policy & Management	
International Relations & Political Science	
Life Science & Biotechnology	
Medicine, Health & Nutrition	
Physical Science & Mathematics	
Psychology & Social Sciences	
Sports: Science, Management & Training	
Tourism & Hospitality	
Internships & Community Service	
CHINA: BEIJING	10
Business & Economics	
Chinese Language & Area Studies	
Internships & Community Service	
COSTA RICA: SAN JOSE	12
Spanish Language & Area Studies	
Internships & Community Service	
ENGLAND: LONDON	14
Arts: Design, Visual & Performance	
Business & Economics	
Communications: Journalism, Media & Advertising	
Computer Science & Information Systems	
Criminology, Forensics & Law	
Engineering & Applied Science	
Environment: Science, Policy & Management	
Fashion Promotion & Marketing	
International Relations & Political Science	
Medicine, Health & Nutrition	
Psychology & Social Sciences	

Sports: Science, Management & Training	
Tourism & Hospitality	
Internships & Community Service	
FRANCE: PARIS	16
Business & Economics	
Fashion & Luxury Goods Management	
French Language & Area Studies	
Internships & Community Service	
IRELAND: DUBLIN	18
Arts: Design, Visual & Performance	
Business & Economics	
Communications: Journalism, Media & Advertising	
Computer Science & Information Systems	
Criminology, Forensics & Law	
Tourism & Hospitality	
Internships & Community Service	
ITALY: FLORENCE	20
Arts: Photography & New Media	
Design: Graphic, Interior & Product	
Fashion & Jewelry Design & Merchandising	
JAPAN: TOKYO	22
Business & Economics	
Communications: Journalism & Media	
International Relations & Political Science	
Japanese Language & Area Studies	
Social Science & Humanities	
KENYA: NAIROBI	24
Business & Economics	
Communications: Journalism, Media & Advertising	
Computer Sciences & Information Systems	
Criminology, Forensics & Law	
Environment: Science, Policy & Management	
Foreign Languages & Area Studies	
International Relations & Political Science	
Life Science & Biotechnology	
Medicine, Health & Pharmacology	
Psychology & Social Sciences	
Tourism & Hospitality	
Internships & Community Service	
PERU: LIMA	26
Business & Economics	
Spanish Language & Area Studies	
Tourism & Hospitality	
Internships & Community Service	

RUSSIA: MOSCOW (Temporarily Suspended)	
<i>Visit the KEI website for details.</i>	
SCOTLAND: EDINBURGH	28
Business & Economics	
Computer Science & Information Systems	
Engineering & Applied Science	
Fashion: Design, Styling & Merchandising	
Foreign Languages & Area Studies	
Life Science & Ecology	
Medicine, Health & Nutrition	
Physical Science & Mathematics	
Psychology & Social Sciences	
Sports: Science, Management & Training	
SPAIN: BURGOS	30
Business & Economics	
Engineering & Applied Science	
Physical Science & Mathematics	
Spanish Language & Area Studies	
Internships & Community Service	
THAILAND: BANGKOK	32
Arts: Design, Visual & Performance	
Business & Economics	
Communications: Media & Film	
Computer Science & Information Systems	
Environment: Science, Policy & Management	
International Relations & Political Science	
Life Science & Ecology	
Medicine, Health & Nutrition	
Physical Science & Mathematics	
Psychology & Social Sciences	
Thai Language & Area Studies	
Tourism & Hospitality	
UAE: RAS AL KHAIMAH	34
Arabic Language & Middle East Studies	
Arts: Architecture & Design	
Business & Economics	
Communications: Journalism & Public Relations	
Computer Science & Information Systems	
Engineering & Applied Science	
Life Science & Biotechnology	
Physical Science & Mathematics	
Internships & Community Service	

APPLICATION	36
SENDING INSTITUTIONS	<i>inside back cover</i>



WHY **kei**?

KEI was founded on the belief that education abroad should be attainable for all students regardless of their academic focus, professional interests, foreign language proficiency and financial means. Our core values of access to education, global participation and cultural understanding are integral to all KEI programs.

ACCESS TO EDUCATION

AFFORDABLE PROGRAMS

We strongly believe that finances should not be a deterrent to education abroad. KEI offers affordable, comprehensive, quality programs. Scholarships, grants and payment plans are available. Students from state universities and small liberal arts colleges account for 80% of our participants.

PERSONALIZED SUPPORT

Students come first! We take the time to get to know students as an individual, including their academic and personal interests. Small program sizes allow us to offer personalized advising and support before, during and after the program.

DIVERSITY

We welcome students from diverse backgrounds, which reflect the ethnic and cultural complexity of our world. KEI partners with many Historically Black Colleges and Universities, Hispanic Serving Institutions and other minority serving institutions. More than 35% of KEI participants are students of color, which is significantly more than the national average.

GLOBAL PARTICIPATION

MAJOR-SPECIFIC COURSES

We don't just say it - we do it. KEI offers more courses in more academic concentrations than any other study abroad organization. Major-specific courses are complemented with general education, regional studies and foreign languages.

EXPERIENTIAL LEARNING

KEI offers internships, research and community service at most program locations. Internships and research have a minimum commitment of 120 to 240 hours, awarded 3 to 6 credits and organized with companies, not-for-profits, medical clinics and host university faculty. Community service is not for credit, but offers a flexible volunteer schedule.

NO LANGUAGE BARRIER

Knowledge of a foreign language is not required to participate on a KEI program. Courses are taught in English. Some programs offer additional courses taught in the host language. Internships, research and service can be arranged in English or language of the host country.

CULTURAL UNDERSTANDING

REGIONAL STUDIES & FIELD TRIPS

KEI programs offer regional studies courses and field trips to culturally and historically significant sites. These activities facilitate cultural awareness and understanding, and help students integrate into the host society.

FOREIGN LANGUAGE

Studying a foreign language is one of the best ways to learn about a culture. KEI offers intensive courses in critical languages such as Japanese, Russian, Mandarin and Swahili as well as modern languages such as Spanish and French. Students can earn 3 to 12 language credits per term, depending on their interests, academic needs and availability.

INTEGRATION WITH LOCAL STUDENTS

KEI integrates program participants with students from the host university in courses, internships and housing (when possible). That means more interaction with local students and the community, better language acquisition and enhanced cultural awareness.

YOUR JOURNEY WITH KEI



MONTY MCGEE
Norfolk State University

My experience in China was life changing. There is no better way to increase understanding of a complex country like China than to study and intern abroad. Living in Beijing for a semester, meeting students from China and around the world, and studying the culture and language of a rising global superpower was the best experience of my life. There is nothing I would change about my KEI experience.

STEP 4 PREPARE FOR DEPARTURE

KEI pre-departure guide & advising
KEI visa & travel guides, advising & support
KEI pre-departure orientation
KEI pre-registers you for courses abroad
KEI registers you with DOS Traveler's Program

STEP 3 APPLY & COORDINATE

KEI student portal & application
KEI coordination with your university
- courses & academic credit approval
- financial aid
- medical & travel insurance



MARY OCHILTREE
Washington State University

Ireland was absolutely amazing! KEI did a great job making sure we were well prepared in advance and then had the outlets for support while we were there. The price was lower than any other program and it was well worth the cost! I will definitely put the word out there about the KEI program. Thanks for everything!

STEP 2 REVIEW FINANCING

KEI accepts all student financial aid
KEI Affiliate Grant = \$1,000 (see page 5)
KEI Travel Grants = \$500 to \$1,000
KEI payment plans (no fees; no interest)
KEI resources for external funding



STEPHANIE MORGAN
Florida Atlantic University

Studying in England was always a dream of mine but it seemed far fetched for a student supporting herself - until I found KEI. KEI offered an awesome program in the heart of London for a great price.

I thoroughly enjoyed exploring London and Europe while earning credit towards my degree. The lessons learned changed my entire life. This was my first time leaving home. Now I visited 5 continents and pursuing a masters degree abroad.

If it weren't for KEI's commitment to affordable and quality programs, I would have never had this life changing experience. KEI staff was helpful the entire process of getting ready and during my program. I am forever thankful to KEI for my time in London and all the good it has done for me.

STEP 1 FIND YOUR PROGRAM

KEI website: www.KEIabroad.org
- search by major, location & term
- review program inclusions & fees
- view courses & syllabi
KEI's fiendly & knowledgeable staff is ready to help

STEP 5 STUDY ABROAD

KEI Onsite Director
Comprehensive orientation
Airport reception
KEI weekly group activities
Cultural field trips & excursions
Comprehensive medical & travel insurance
24/7 emergency assistance

STEP 6 RETURN HOME

KEI re-entry guide & advising
Official transcripts
KEI Ambassador Internship
KEI Go Again Grants
KEI Alumni Handbook

PROGRAM REVIEWS

JAKE WILSONNESS University of Illinois, Chicago



Moscow was an amazing experience to say the least. I am so happy I had the chance to see, study, interact with, and relate to everything in Russia. Just the other weekend I was at the Tretakov looking at pieces by Ivanov and Vereshchagin, and was in awe of the art and history. Two weeks ago I was in Kazan with the KEI group visiting Orthodox churches and mosques in the capital of Tartarstan. And just the other day, my friends Francesca from Switzerland and Luke from Boston were eating kartoshka in the university square overlooking the city. There are a thousand stories like these. I feel as alive as I did when I first moved to Chicago, if not more. Thank you and hope all is well with the KEI crew. Paka!

SALLY BOWEN Viterbo University



I feel that our program compared to other American students studying in Kenya was the best because everything was so well planned and there was so much to do. We experienced much more of the country than the other students. The excursions and Patrick, KEI Director, were great. There is nothing I did not enjoy about the program.

JORDAN BROWN Capital University



I think about Paris every day and my time spent there remains to be the best memory of my life. Particularly, the day we spent in Bourgogne, eating cheese and saucisson at Daniele's lovely home and walking around Chablis with my shoes off and taking a nap next to the stream. Thank you so much for those great memories.

ASHLEY ELLIS Lincoln University



Thailand was beyond incredible, more like life changing. The different places, the food, the people and rich culture made my stay an unforgettable one. The KEI Onsite Director played a critical role in making our semester abroad enjoyable and educational. A lot of time and effort was dedicated to planning activities for my peers and I. We visited different beautiful areas, such as the Island of Kho Samet, the Grand Palace, Chiang Mai, Bangkok and many other places.

I am a Biochemistry and Molecular Biology major. So the courses I took were science-based; although I did complete an exciting Thai Language and Culture course. The teaching styles were different but with proper time management, it is more than possible to maintain excellent grades while exploring all Thailand has to offer.

The KEI program arranged housing that was conveniently located within walking distance of Mahidol University. The people in the community were very pleasant and accepted us with open arms.

Thank you KEI for this amazing program!

KATHRYN RAYBOULD New Mexico State University



The program in Edinburgh was fantastic. Everyone was helpful and welcoming. The Onsite Director was a terrific . She helped with problems and was always available. The field trips were wonderful. I enjoyed my time abroad and can't wait to go back.

HEALTH & SAFETY

KEI SERVICES

KEI is committed to a safe and healthy experience abroad. We closely monitor the world's situation and receive regular updates from U.S. and local authorities. While no organization can guarantee safety, KEI reduces and manages risk by including the following program components and services.

- ✓ **ONSITE DIRECTOR**
- ✓ **24/7 EMERGENCY ASSISTANCE**
- ✓ **COMPREHENSIVE INSURANCE**
- ✓ **EMERGENCY RESPONSE PLAN**
- ✓ **LOCAL PHONE/SIM FOR STUDENTS**
- ✓ **PRE-DEPARTURE GUIDE & ADVISING**
- ✓ **AIRPORT WELCOME & TRANSFER**
- ✓ **ONSITE ORIENTATION**
- ✓ **SECURE & CLEAN HOUSING**
- ✓ **SUPERVISED FIELD TRIPS**
- ✓ **OVERSIGHT VISITS BY KEI STAFF**
- ✓ **EVALUATION VISITS BY UNIVERSITIES**
- ✓ **REGISTRATION WITH U.S. DEPARTMENT OF STATE TRAVELER'S PROGRAM**

PARENTS

We encourage parents to take an active role in helping their children prepare for study abroad. Being involved will not only better prepare you in the event of an emergency, it will also alleviate some anxiety for both yourself and your child. Parents are welcome to email and call our office with questions.

24/7 EMERGENCY ASSISTANCE

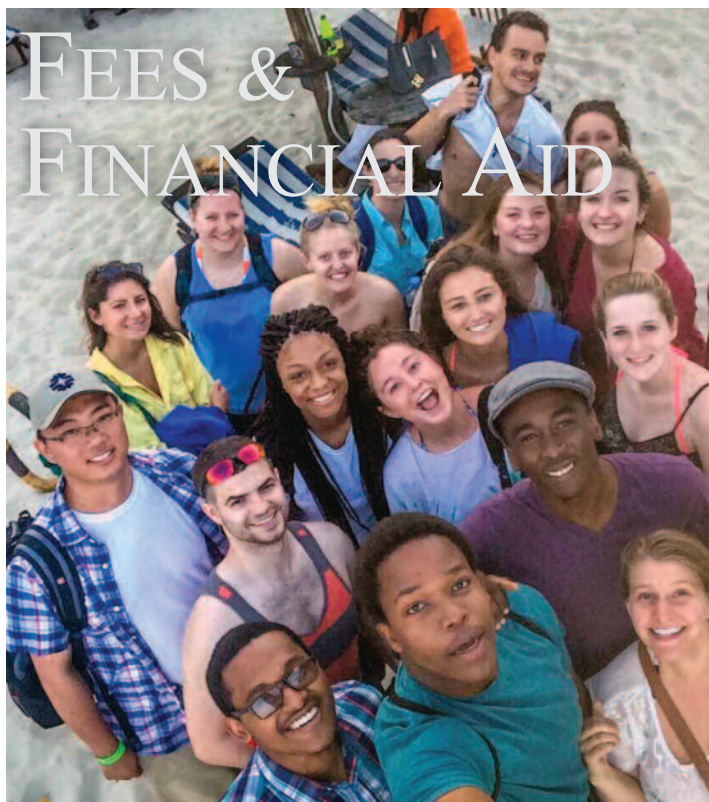
When you go abroad with KEI, you are not alone. Our Onsite Directors are available 24-hours a day in case of an emergency, to advise students about medical services, and to assist with local authorities. In the event of a major emergency, KEI coordinates with the U.S. Embassy, local authorities, host university, home university, insurance provider and parents to arrange for a safe exit from the area.

INSURANCE

KEI programs include comprehensive medical and travel insurance with \$250,000 coverage and zero deductible. The plan covers medical care and quarantine, repatriation, medical and security evacuation as well as other benefits. The policy is administered by Cultural Insurance Services International. For more information, visit www.KEIabroad.org/programs/health-and-safety/.

MOBILE PHONES

Every student has the option of receiving a local mobile phone or SIM card with initial minutes. Students are responsible for topping-up minutes as needed. The phones and SIM cards are intended for emergency communication and convenience. The phone number will be local to the country of study.



FINANCIAL AID

KEI accepts all federal, state and institutional financial aid released by your university. Students may also be able to use Veterans Educational Benefits for study abroad. Payment of the program fee may be deferred until aid is disbursed - even if the program is already in session. In addition, KEI offers grants, scholarships and payment plans to qualified students. Visit www.KEIabroad.org/programs/financial-aid-payment/ for more information.

KEI AFFILIATE GRANT

KEI has affiliations and special status agreements with more than 160 universities and colleges. Students who attend one of these institutions receive an automatic \$1,000 grant for any semester, quarter, trimester and academic year program. Visit www.keiabroad.org/faculty-advisors/sending-institutions/ for a list of KEI affiliated and special status schools.

KEI TRAVEL GRANT

KEI Travel Grants range from \$500 to \$1,000, and are intended for students interested in interning with KEI while studying abroad. Students must have a minimum GPA of 3.0, and submit a grant essay and proof of financial need with their program application, and successfully complete internship requirements.

GO AGAIN GRANT

KEI program alum who study abroad again with KEI receive a \$500 grant for semester, trimester, quarter and academic year, and a \$250 grant for summer programs.

EARLY ENROLLMENT DISCOUNT

Apply and enroll in a KEI program before the application deadline and the application fee of \$100 will be deducted from the program price.

PAYMENT PLANS

KEI offers interest-free payment plans to qualified students. Qualification requirements are decided by KEI on an individual basis. We will work to find a plan that meets your financial situation.

AFFORDABLE

KEI is one of the most affordable comprehensive program providers. Our programs offer the best value (what you get for your money). Don't take our word for it: compare! If you find another program at the same university with the same services and inclusions, we will match the price and give you a \$500 grant to help with travel. You will not find a guarantee like this anywhere else.

Do not mistake affordability with quality. We deliver high quality programs at a lower price by removing advertizing from our budget, responsible management and leveraging international resources. This means savings for students.

INCLUSIVE

The following are included in the KEI program fee. Students may opt-out of KEI housing or field trips and receive a deduction from the program fee.

- ✓ Tuition and fees at host university
- ✓ Housing (and meals in certain locations)
- ✓ Medical and travel insurance
- ✓ Cultural field trips and activities
- ✓ Internship for qualified students (in most locations)
- ✓ Official transcript
- ✓ Pre-departure guide and advising
- ✓ Onsite Director
- ✓ 24/7 Emergency assistance and registration with STEP
- ✓ Airport welcome and transfer
- ✓ Onsite orientation
- ✓ Use of mobile telephone

ACADEMICS



STANDARDS

KEI programs are hosted by respected institutions of higher learning, which are carefully selected based on their reputation, faculty expertise and ability to provide a unique and challenging academic environment. KEI partner colleges and universities are accredited by the official validating body in the host country.

CREDIT & TRANSCRIPT

KEI program participants earn credit for coursework and academic work done in conjunction with internships. One official and one unofficial transcript are included with the program. Transcripts are issued by the host university, KEI's University of Record and/or Co-sponsor Institution.

Universities and colleges have different requirements and procedures for transferring program credit. Students should consult with the study abroad and/or academic advisor at their home university or college. Call KEI for assistance. We will guide you through the credit approval process.

UNIVERSITY OF RECORD

A University of Record (UOR) is an accredited university in the U.S. that oversees study abroad programs and awards program credit. Lincoln University of Pennsylvania is the UOR for most KEI programs. Chartered in 1854, Lincoln is the first historically black liberal arts university and accredited by the Middle States Commission on Higher Education.

COSPONSORED PROGRAMS

Cosponsor Institutions (CSI) are universities and colleges accredited in the U.S. that partner with KEI on semester, academic year and/or summer programs abroad. Cosponsored programs are managed by KEI. The CSI provides academic oversight, issues program transcripts and, in some cases, manages the application process.

The State University of New York (SUNY), a globally recognized public university system accredited by the Middle States Commission on Higher Education, cosponsors various KEI programs. *SUNY University at Albany* sponsors programs in Russia; *SUNY College at Old Westbury* sponsors programs in England and France; and *SUNY College at New Paltz* sponsors programs in Kenya.

Northern Arizona University (NAU) is a cosponsor for programs in Costa Rica. NAU, founded in 1899, is accredited by the Higher Learning Commission and ranked in the top 2.9% of universities worldwide by the Center for World University Rankings.

Cosponsored programs also include KEI's Integrated Summer Programs, which combine courses taught by faculty from the host university with courses taught by visiting faculty from the U.S. Credit (and transcripts) for courses taught by visiting professors may be awarded by their universities in the U.S.

For more information about UOR and CSI visit:
www.KEIabroad.org/programs/credit-transcripts/.

✓ **COURSES**
● **INTERNSHIPS**

	AUSTRALIA	CHINA	COSTA RICA	ENGLAND	FRANCE	IRELAND	ITALY	JAPAN	KENYA	PERU	RUSSIA	SCOTLAND	SPAIN	THAILAND
Area & Culture Studies	✓	✓	✓	✓	✓	✓		✓	✓	✓	✓	✓	✓	✓
Biology & Life Science	✓	●		✓					✓			✓	✓	✓
Business	✓	✓	●	✓	✓	✓	✓	✓	✓	✓	✓	✓	✓	✓
Chemistry	✓			✓					✓			✓	✓	✓
Communication	✓	●	●	✓	✓	✓	✓	✓	✓	✓		✓		✓
Computer Science	✓	●		✓		✓			✓	✓		✓	✓	✓
Criminology	✓			✓		✓			✓			✓		
Design	✓			✓		✓	✓		✓			✓		✓
Ecology & Earth Science	✓		●	✓					✓	✓		✓		✓
Economics	✓	✓		●	✓	✓		✓	✓	✓	✓	✓	✓	✓
Education	✓		●	✓				✓	●					✓
Engineering	✓			✓						✓		✓	✓	✓
Environment	✓		●	✓	✓			✓	✓	✓		✓		✓
Fashion				✓	✓	✓	✓					✓		
Film & Media	✓		✓	✓	✓				✓			✓		✓
Finance & Accounting	✓	✓		✓	✓	✓		✓	✓	✓		✓		✓
Foreign Language	✓	✓	✓		✓			✓	✓	✓	✓	✓	✓	✓
Forensics	✓			✓										
General Education	✓	✓	✓	✓	✓	✓		✓	✓	✓	✓	✓	✓	✓
Health (Public / Admin.)	✓			✓					✓	✓			✓	✓
History	✓	✓		✓	✓	✓		✓	✓	✓	✓	✓	✓	✓
Humanitarian Aid	✓	●	●	●				✓	✓			✓	●	✓
Information Systems	✓			✓	✓	✓			✓	✓		✓	✓	✓
International Relations	✓	✓		✓	✓	✓		✓	✓		✓	✓	✓	✓
Journalism & Media	✓	●		✓		✓		✓	✓		✓	✓		✓
Law & Legal Studies	✓	✓		✓	✓	✓		✓	✓		✓	✓		✓
Literature & Writing	✓		✓	✓	✓	✓		✓	✓	✓	✓	✓		✓
Marketing & Advertising	✓	✓		✓	✓	✓	✓	✓	✓	✓		✓	✓	✓
Mathematics	✓			✓	✓	✓			✓			✓		✓
Music	✓			✓		✓			✓					✓
Nutrition & Food Science	✓			✓			●			✓			✓	✓
Physics	✓			✓								✓	✓	✓
Political Science	✓	✓		✓	✓	✓		✓	✓	✓	✓	✓	✓	✓
Pre-Medicine	✓			✓					✓				✓	✓
Psychology	✓	●		✓	✓				✓	✓		✓		✓
Religion & Philosophy	✓			✓				✓	✓	✓		✓		✓
Sociology	✓			✓	✓			✓	✓	✓		✓		✓
Sports & Recreation	✓	●		✓				✓	✓					✓
Theater	✓			✓		✓								
Tourism & Hospitality	✓	●		✓		✓		✓	✓	✓			●	✓
Visual Arts	✓			✓			✓		✓	✓	✓			✓



OVERVIEW

ACADEMIC CONCENTRATIONS

Courses and internships are available in the following academic and professional disciplines.

Trimester & Academic Year

Arts: Design, Architecture, Visual & Performance
 Australian Studies & Foreign Languages
 Aviation Management
 Business & Economics
 Communications: Journalism, Media & Advertising
 Computer Science & Information Systems
 Criminology, Forensics & Law
 Education & Child Development
 Engineering & Applied Science
 Environment: Science, Policy & Management
 Fashion: Design, Styling & Merchandising
 International Relations & Political Science
 Life Science & Biotechnology
 Medicine, Health & Nutrition
 Physical Science & Mathematics
 Psychology & Social Sciences
 Sports: Science, Management & Training
 Tourism & Hospitality
 Internships & Community Service

COMPREHENSIVE FEE

Trimester: \$16,950 (Fall, Winter or Spring)

The fee is for programs offered during 2024. Students enrolled in multiple trimesters receive a \$500 discount for the second and third terms.

PROGRAM DATES

Fall Trimester: mid June - mid October
 Winter Trimester: mid October - mid February
 Spring Trimester: mid February - mid June

The academic year in Australia starts with the Spring trimester and continues through Fall trimester.

The Winter trimester is only open to students who combine the Spring, Winter and Fall Trimesters, or the Fall, Winter and Spring trimesters.

KElabroad.org/Australia

LOCATION

Brisbane, the state capital of Queensland, is a cosmopolitan mix of glittering high-rises and nature. It is Australia's fastest growing city with slick fashion boutiques and numerous cafes and clubs. The nearby national parks, forested hills and beaches are also ideal for outdoor and sports enthusiasts who enjoy hiking, biking, water sports and much more.

The neighboring Gold Coast, located 50 miles south of Brisbane, offers some of the most beautiful beaches in the world. It is also Australia's most popular tourist destination and is famous for its surfing, beaches and natural beauty.

The program was amazing, beyond my expectation. The Onsite Director was welcoming and very helpful. The housing was beautiful, the campus was easy to navigate and courses were intriguing..

- Soren

New Mexico
 Institute of
 Tech. & Mining

UNIVERSITY

Griffith University is one of the top ranked research universities in Australia with over 45,000 students. The University is validated by the Australian Ministry of Education and offers more than 300 undergraduate and graduate degrees in a wide array of academic disciplines, including business, education, engineering, environmental studies, health sciences, humanities, music and visual arts. In addition, the Griffith Business School is AACSB accredited.



ONSITE DIRECTOR

MS. ANN WADSWORTH

Originally from Boston, Ann studied abroad in Australia in 1990 and loved it so much she returned to live and work here! Now married to an Aussie with three little 'joeys' of her own, Ann has been sharing her love of Australia, working with students studying in Queensland. Ann works closely with the KEI Onsite Assistant to organize the orientation and field trips, and support students during the program.

FIELD TRIPS

Below are the most commonly organized field trips. KEI reserves the right to change excursions for destinations of equal value.

- ✓ Brisbane (weekly activities)
- ✓ Sydney (2-day excursion)
- ✓ Gold Coast Beach (day trip)
- ✓ Binna Burra & Lamington National Park (day trip)
- ✓ Lone Pine Koala Sanctuary (day trip)

HOUSING

Students have the option of studying and living on the Gold Coast or Nathan campus. The Gold Coast campus is a 20 minute commute from Surfer's Paradise. The Nathan campus is a 15 minute commute from central Brisbane. Nathan and Gold Coast are a 60 minute commute by university shuttle bus.

On the Gold Coast, students live in shared apartments off-campus in Surfer's Paradise. Apartments consist of a shared kitchenette, living area, bathroom and double bedrooms. In Nathan, students live on-campus in a residence hall that consists of shared lounges, bathrooms and double bedrooms.

Laundry facilities and WiFi are available in the residences. There are several cafeterias and cafes on campus, and numerous restaurants and grocery stores off-campus.

ACADEMICS

TRIMESTER

- ✓ Maximum of 5 courses per trimester
- ✓ Most courses are 3 to 4 credits

Students can select courses offered at the Gold Coast or Nathan campus (but not both). Academic credit is awarded by Griffith University and Lincoln University (accredited in the USA).

INTERNSHIPS & SERVICE

Internships and service allow students to develop professional and personal skills. Students must enroll in the *3002LFC Community Internship*, which combines 50 to 80 hours of practical experience with academic work to facilitate learning. Placements are available in business, hospitality, communications, health, exercise science, social work, education, music, law, criminology, STEM, psychology, human services and veterinary/animal science.



COURSE OFFERINGS

Students select courses from more than 600 offerings by the following Griffith University schools and colleges. Visit the KEI website to search for courses and syllabi.

BUSINESS & GOVERNMENT

Accounting	International Relations
Business Law	Logistics
Economics	Management
Event Management	Marketing
Finance	Public Administration
Government	Sport Management
Human Resources	Tourism & Hospitality

CRIMINOLOGY & LAW

Criminology	Law
-------------	-----

EDUCATION

Adult & Vocational	Special Education
Early Childhood	TESOL
Primary & Secondary	Theatre

ENGINEERING & INFORMATION TECHNOLOGY

Civil & Structural Eng.	Mechanical Eng.
Electrical Eng.	Mechatronic Eng.
Environmental Eng.	Multimedia Design
Information Systems	Software Eng.

ENVIRONMENT, PLANNING & ARCHITECTURE

Architecture	Environmental Sciences
Ecology	Marine Sciences
Environmental Mgmt.	Urban Planning

HEALTH

Biomedical Science	Nursing
Child & Family Studies	Nutrition & Dietetics
Dentistry	Occupational Therapy
Environmental Health	Pharmacy
Exercise Science	Psychology
Health Management	Public Health
Human Services	Social Work
Mental Health	Speech Pathology
Midwifery	

HUMANITIES & LANGUAGES

Creative Writing	Languages & Linguistics
History	Mass Communications
Journalism	Social Sciences

MUSIC

Classical Music	Musical Theatre
Opera & Voice	Music Education
Jazz	Music Technology
Popular Music	Pedagogy

SCIENCE & AVIATION

Aviation	Forensic Science
Biological Sciences	Marine Science
Biomedicine	Medicine
Biomolecular Science	Mathematics
Chemistry	Physical Sciences
Environmental Sciences	

HUMANITIES & LANGUAGES

Animation	Fine Art
Design Futures	Games Design
Digital Media	Indigenous Art
Film & Screen Media	Photography

CHINA Beijing



OVERVIEW

ACADEMIC CONCENTRATIONS

Courses and internships are available in the following academic and professional disciplines.

Semester & Academic Year

Business & Economics
Chinese Language & Area Studies
Internships & Community Service

Summer

Internship with Intercultural Communications

COMPREHENSIVE FEE

Semester: \$11,950 (Fall or Spring)
Academic Year: \$23,900 (Fall & Spring)
Summer Session: \$5,950

Fees are for academic year 2024-2025. Students enrolled in multiple terms receive a \$500 discount.

PROGRAM DATES

Fall Semester: late August - mid December
Spring Semester: late February - late June
Summer Session: mid June - mid August

KElabroad.org/China

LOCATION

Beijing is the political, economic and cultural capital of China. It is the intellectual hub of the nation, with more universities than any other city in China. The Forbidden City and Temple of Heaven are reminders of China's 3,000 years of history, while the modern skyscrapers and transportation are signs of its optimistic future.

Definitely the time of my life!

I couldn't ask for anything better. I learned a lot about China through courses and field trips. In Shanghai I stood in the room where the first Communist meeting was held. You get chills when you think about what actually happened. Nanjing, Sanzhou, Hanzhou and Wuxi were equally impressive. To get a history lesson in the place it happened is priceless.

- Robert

Auburn
University



UNIVERSITY

The University of International Business and Economics (UIBE), founded in 1951, is recognized by the Ministry of Foreign Trade and Economic Development as China's leading school for business, law, public relations and Chinese language studies. In 1972, UIBE served as the forum for President Nixon's historic visit, restoring diplomatic relations between the U.S. and China. Today, UIBE's faculty continue to play a central role in China's economic development.

- ✓ Among the oldest and most respected universities in China
- ✓ Designated as a "KEY" university by the Ministry of Education
- ✓ Oldest and best developed Chinese language programs in China
- ✓ Academic community of 25,000 students and 1,600 professors



ONSITE DIRECTOR

Ms. EMILY GUO YING

Emily's main role is to ensure a positive and safe experience in China. Emily works closely with the KEI Onsite Assistant to organize the orientation, field trips, cultural activities and support students during the program. Emily believes that everyone will find China to be a beautiful country filled with history, excitement and friendly people.

FIELD STUDIES

Below are the most commonly organized field trips. KEI reserves the right to change excursions for destinations of equal value.

- ✓ Beijing (weekly activities)
- ✓ Great Wall of China (day trip)
- ✓ Shanghai (2-day excursion; semester)
- ✓ Xi'an (2-day excursion; semester)

HOUSING

Students live at the International Student Residence on campus. Rooms are double occupancy, with private bathroom, and shared with other students studying at UIBE.

UIBE has a dining hall that serves Chinese food, a cafe for snacks and two restaurants offering international cuisine. A wide variety of restaurants and stores are available near the campus and throughout Beijing. Food in China is relatively inexpensive.

ACADEMICS

SEMESTER

Students choose one of the following options:

- ✓ Chinese language (9 to 12 credits) plus 2 elective courses (6 credits)
- ✓ Chinese language (9 to 12 credits) plus internship (3 to 6 credits)
- ✓ Four to six elective courses (12 to 18 credits)
- ✓ Four elective courses (12 credits) plus internship (3 to 6 credits)

SUMMER

- ✓ *Intercultural Communication Management* (3 credits)
- ✓ *Internship* (3 credits) or *Community Service* (0 credit)

INTERNSHIPS & SERVICE

Internships (for-credit) and community service (not-for-credit) allow students to learn from practical experience not attainable in a classroom setting. Internships require a commitment of 120-240 hours (3-6 credits). Service does not have a minimum requirement. Placement is based on professional interests. Examples of previous placements include 21 Vianet Group, Hiller Aviation, Dragon TV, Save the Children and State Key Laboratory of Microbial Resources. Actual placement may be with a different organization. Positions are available in the following professional fields:

Business	Marketing	Finance
Communications	Commerce Law	Public Relations
Teaching English	Humanitarian Aid	Science Research



COURSE OFFERINGS

Academic credit for courses is awarded by UIBE and Lincoln University (accredited in the U.S.). Academic credit for internships is awarded by Lincoln University. Below is a list of courses taught in English. KEI and UIBE reserve the right to cancel or modify courses listed on this page. Do not select courses from this page. Visit KEI website for the most updated list of courses, as well as descriptions and syllabi.

SEMESTER

CHINESE LANGUAGE & AREA STUDIES

- Chinese Comprehensive Reading
- Chinese Listening
- Chinese Speaking
- Chinese Reading & Writing
- Chinese Newspaper Reading
- Business Chinese
- China's Society from Cross-Cultural Perspectives
- The Contemporary China

BUSINESS & ECONOMICS (ELECTIVES)

- Business Essential in China
- International Corp. Marketing Strategies in China
- China in the Global Economy
- Chinese Business & Management
- Chinese Eco. & Society: Developments & Problems
- Chinese Traditional Culture & Leadership Behavior
- Economic Transformation of China
- Environmental Protection in China
- Human Resources Management in China
- Intercultural Communication: Theory & Practices
- International Strategy
- Supply Chain Management
- Antitrust, Regulation & Competition Policy
- Chinese Business Culture & Consumer Behavior
- Corporate Strategy and Business Model
- International Conflict & Crisis Management
- International Eco. Cooperation: The Case of China
- International Finance: System, Market & Investment
- International Investment
- International Trade & FDI In China
- Marketing in China
- Project Management

SUMMER

- Intercultural Communication Management
- Internship: Professional
- Community Service

COSTA RICA San Jose



KElabroad.org/Costa-Rica

OVERVIEW

ACADEMIC CONCENTRATIONS

Courses and internships are available in the following academic and professional disciplines.

Spanish Language & Hispanic Studies
Internships & Community Service

COMPREHENSIVE FEE

Semester: \$10,950 (Fall or Spring)
Academic Year: \$21,950 (Fall & Spring)
Summer Session: \$4,950

Fees are for academic year 2024-2025. Students enrolled in multiple terms receive a \$500 discount.

PROGRAM DATES

Fall Semester: late August - mid December
Spring Semester: mid January - early May
Summer Session: mid/late May - late June

LOCATION

Costa Rica is one of the most beautiful, welcoming and diverse countries in Latin America. There are over 10,000 identified species of plants, 850 species of birds, 800 species of butterflies, and 500 species of mammals, reptiles, and amphibians. Costa Rican Spanish is said to be among the easiest to understand, and makes an ideal location for second language learners. San Jose, the capital, offers a multitude of cultural activities including theaters, museums, parks and nearby nature reserves.

I have been in Costa Rica for two weeks.
My Spanish professor is great and I
learned more Spanish in two weeks here than
I would in a month at home.
Our Spanish class only has four people in it,
so we have plenty of opportunities to practice.

- Daniella

Northern
Arizona
University



UNIVERSITY

The program is hosted by Universidad Fidelitas and managed by Northern Arizona University. Fidelitas is respected throughout Costa Rica for its undergraduate and graduate programs in engineering, business, law and education. Approximately 4,500 students study at the main campus, which is located in San Pedro, an area of San Jose recognized for its many universities.

Northern Arizona University (NAU) provides the academic curriculum and oversight, and manages the program. NAU is accredited by the Higher Learning Commission and ranked in the top 2.9% of universities worldwide by the Center for World University Rankings.



ONSITE DIRECTOR

MR. JAVIER TREJO-SAINZ

Javier is a Northern Arizona University Spanish instructor. He lives in San Jose full-time while teaching for the program, leading excursions, coordinating housing and courses, and serving as the point of contact for students during their time in Costa Rica. Javier has over 30 years of experience teaching Spanish and managing study abroad programs.

FIELD STUDIES

Below are the most commonly organized field trips. NAU reserves the right to change excursions for destinations of equal value.

- ✓ San Jose (weekly activities)
- ✓ Puerto Viejo or Manuel Antonio National Park (2-day excursion)
- ✓ Nicaragua (2-day excursion)

HOUSING

Students live with a host family in a single-occupancy room. Most families live within walking distance or a short commute of Universidad Fidelitas. Living with a family is a great way to improve Spanish proficiency and learn Costa Rican customs. Families are screened by the Onsite Director. Students are expected to communicate with their family in Spanish, although most families have at least one person who speaks English.

Meals and laundry are provided by the host family. Breakfast is offered prior to the start of classes. Lunch is between 12:00 pm and 1:00 pm on days that the student does not participate in university activities. Dinner is offered in late afternoon, between 5:00 pm and 7:00 pm. Laundry service is once per week.

ACADEMICS

SEMESTER

- ✓ Up to 5 courses per semester (15 to 17 credits)
- ✓ Internship is optional (3 to 6 credits)

SUMMER

- ✓ Up to 2 courses (6 to 7 credits)

Courses and internships are offered by Northern Arizona University (NAU). NAU reserves the right to cancel or modify courses as needed. Visit the KEI website for the most updated list of courses, as well as descriptions and syllabi. Academic credit is awarded by NAU (accredited in the U.S.).

The program in Costa Rica is a partnership between KEI and NAU. KEI provides program advising and application management. NAU manages the enrollment process, pre-departure advising and in-country services. Students must complete the KEI application. After being admitted to the program, students will be directed to complete enrollment with NAU. Contact KEI for more information.



COURSE OFFERINGS

The program focuses on intensive Spanish language study. During the Spring semester 2 to 3 business courses are also offered. *Note that there is a supplemental fee for business courses.*

SPANISH LANGUAGE (SEMESTER & SUMMER)

- SPA101 First Year Spanish I (4 cr.)
- SPA102 First Year Spanish II (4 cr.)
- SPA201 Second Year Spanish I (4 cr.)
- SPA202 Second Year Spanish II (4 cr.)
- SPA301 Advanced Spanish Grammar (3 cr.)
- SPA303 Intermediate Oral Communication (3 cr.)
- SPA304 Spanish Stylistics: Inter. Composition (3 cr.)
- SPA310 Commercial Spanish (3 cr.)
- SPA321 Introduction to Literature in Spanish (3 cr.)
- SPA323 Spanish Oral Communication] (3 cr.)
- SPA323 Latin American Culture & Civilization] (3 cr.)
- SPA340 Spanish Linguistics (3 cr.)
- SPA352 Survey of Spanish-American Literature (3 cr.)
- SPA354 Survey Of Latin American Film (3 cr.)
- SPA404 Advanced Oral & Written Communications (3 cr.)
- SPA406 Latin-American Culture & Civilization (3 cr.)
- SPA423 Advanced Study Abroad (3 cr.)

BUSINESS (SPRING SEMESTER)

- ECO284 Principles of Microeconomics (3 cr.)
- Principles of Macroeconomics (3 cr.)
- MGT101 Introduction to Business (3 cr.)
- MGT405 International Management (3 cr.)
- FIN190 Personal Finance in a Global Economy (3 cr.)
- ECO399 International Trade (3 cr.)
- MGTxxx Cross-cultural Management (3 cr.)

INTERNSHIPS/SERVICE

Internships (for-credit) and community service (not-for-credit) allow students to learn from practical experience not attainable in a classroom setting. Internships are limited and require a commitment of 120-240 hours (3-6 credits). Service does not have a minimum requirement. Placement is based on professional interests. Positions are available in the following professional fields:

- | | | |
|------------------|------------------|------------------|
| Business | Environment | Communications |
| Public Relations | Teaching English | Humanitarian Aid |

ENGLAND London



OVERVIEW

ACADEMIC CONCENTRATIONS

The Semester & Academic Year program at London South Bank University (LSBU) offers a wide selection of major-specific courses. The Semester Internship program combines an internship with courses offered at Anglo Educational Services (AES). The Summer Internship program does not offer courses.

Semester & Academic Year @ LSBU

Arts: Design, Visual & Performance
Business & Economics
Communications: Journalism, Media & Advertising
Computer Science & Information Systems
Criminology, Forensics & Law
Engineering & Applied Science
Environment: Science, Policy & Management
Fashion Promotion & Marketing
International Relations & Political Science
Medicine, Health & Nutrition
Psychology & Social Sciences
Sports: Science, Management & Training
Tourism & Hospitality

Semester Internship & Courses @ AES

London Internship with courses

Summer

London Internship

COMPREHENSIVE FEE

Semester @ LSBU:	\$17,950 (Fall or Spring)
Academic Year @ LSBU:	\$34,900 (Fall & Spring)
Semester Internship:	\$18,950
Summer Internship:	\$5,950

Fees are for academic year 2024-2025. Students enrolled in multiple terms receive a \$500 discount. Program fees may change; refer to the KEI website for updated fees.

PROGRAM DATES

Fall Semester: mid September - mid December
Spring Semester: mid January - early June
Summer Intern: late June - late July

Kelabroad.org/England

LOCATION

London, the capital of both England and the United Kingdom, is the epitome of a global city. With diverse communities, historic landmarks, world class museums, thriving theaters and lively markets, there is a wealth of fascinating things to do. No wonder Samuel Johnson said, "When a man is tired of London, he is tired of life."

London's influence in politics, education, entertainment, media, fashion and the arts contributes to its status as a major global city. Its population draws from a wide range of people, cultures and religions. Over 300 languages are spoken within the city.

Studying at London South Bank University is one of the best decisions I have made. The people, the location everything here is great. A friend and program alum recommended this program to me, and I would definitely recommend it to my friends.

- Matt

Marist College

UNIVERSITY

London South Bank University (LSBU), established in 1892 as Borough Road Polytechnic, is the oldest university in London. The University is regarded for its academic standards, practical curriculum, research, expert faculty and community outreach.

The LSBU student body is one of the largest and most diverse in the UK. The main campus is situated in Southwark, a short walk from many of London's major landmarks. The campus is clustered on several city blocks and includes academic buildings, libraries, residence halls, cafes, sports centers and recreation facilities.



ONSITE DIRECTOR

MS. SUSANNAH KYTE

Susannah is originally from California. She first came to England in 1992 as a study abroad student.

While attending Oxford, she met her husband and moved to England. Her favorite aspect of London is the variety in life, color, food and culture. She enjoys introducing students to London, which in her opinion is the best city in the world.

FIELD STUDIES

Below are the most commonly organized field trips. KEI reserves the right to change excursions for destinations of equal value.

- ✓ London (weekly activities; semester & summer)
- ✓ Stonehenge (day trip; semester)
- ✓ Oxford & the Cotswolds (day trip; semester)
- ✓ Wales or Scotland (2-day excursion; semester)

HOUSING

Students live in the LSBU residence hall or in shared apartments. Housing is in central London near many of London's attractions. The residence hall is organized into suites with a shared kitchen and four to nine single-occupancy bedrooms with a private bathroom. Apartments consist of shared living area, kitchen and bathroom; most bedrooms that are double-occupancy.

There are many restaurants, cafes and shops in the neighborhood. Many students learn how to shop and cook "English-style" by making prawns, mushy peas and toast in their kitchens.

ACADEMICS

SEMESTER: COURSES @ LSBU

- ✓ Maximum of 4 courses (16 credits) at LSBU

SEMESTER: LONDON INTERNSHIP

- ✓ Internship (6 credits)
- ✓ Maximum of 3 courses (9 credits) at AES

SUMMER: LONDON INTERNSHIP

- ✓ Internship (6 credits)

Academic credit for courses at LSBU is awarded by LSBU (accredited in the UK). Credit for all internships and courses offered at AES is awarded by Lincoln University (accredited in the USA).

INTERNSHIPS

Internships allow students to learn from practical experience. Internships require a commitment of 240 hours (6 credits). Placement is based on professional interests. Positions are available in business, media, communications, diplomacy, psychology, social work, law, journalism, computing, medicine, engineering, hospitality, education, and many other fields. Previously, students interned at BMW, Lloyds TSB, Accenture Plc., Air France, Working Titles Films and other companies in London. Actual placement may vary.



LSBU COURSES

Students select courses from more than 250 offerings by the following LSBU schools and departments. Visit the KEI website to view courses and syllabi.

School of Applied Sciences

Biomedical Science	Sport & Exercise Science
Biology	Sports Coaching & Analysis
Forensic Science	Psychology

School of Arts & Creative Industries

Acting & Performance	International Relations
Animation	Media Production
Creative & Digital Tech.	Photography
Fashion	Political Science
Film & TV	Game Design
Journalism	Music & Sound Design
Theater	Creative Writing

School of Business

Accounting	Human Resources
Economics	Management
Entrepreneurship	Marketing
Finance	Supply Chain Management

School of Allied & Community Health

Public Health	Physiotherapy
Social Work	Radiography
Sport Rehabilitation	Eastern Medicine
Occupational Therapy	

School of Engineering

Chemical Engineering	Electrical Engineering
Energy Engineering	Electronics Engineering
Computer Science	Mechanical Engineering
Informatics	Product Design

School of Built Environment & Architecture

Architecture	Construction Management
Civil & Building Engineering	Surveying

School of Law & Social Sciences

Education	Social Sciences
Law	Urban Planning
Criminology	Tourism & Hospitality
Social Justice	Leisure Management

AES COURSES

Courses offered at AES are intended to supplement the semester internship. As such, there is a limited number of general education courses available. Below is a sample list of courses. Courses may change. Visit the KEI website to view courses and syllabi.

HIST2421 History of Modern England
 HRTS3200W International Human Rights
 POLS3406W Globalization and Political Change
 ENGL2100 British Literature
 SOCI1501 Race, Class, and Gender
 ART2501 British Architecture

FRANCE Paris



OVERVIEW

ACADEMIC CONCENTRATIONS

Courses and internships are available in the following academic and professional disciplines.

Semester & Academic Year

Business & Economics
Fashion & Luxury Goods Management
French Language & Area Studies

Summer

French Language & Area Studies
Internship (requires participation in Study & Work)

COMPREHENSIVE FEE

Semester: \$15,950 (Fall or Spring)
Academic Year: \$31,950 (Fall & Spring)
Study & Work: \$23,950 (Spring & Summer)

Fees are for academic year 2024-2025. Students enrolled in multiple terms receive a \$500 discount.

PROGRAM DATES

Fall Semester: early September - mid December
Spring Semester: mid January - mid May
Study & Work: mid January - late July

KEIabroad.org/France

LOCATION

Paris is the capital of France and a major cultural, political and economic center of Europe. The “City of Lights,” as many call it, epitomizes the French spirit. Without a doubt, Paris is one of the most romantic and iconic cities in the world. Images of the Eiffel Tower, the Louvre, broad boulevards and romantic bridges have permeated the global consciousness. Its glamorous architecture, art, theaters and cuisine have a profound influence throughout the world.

Paris was a remarkable experience which
I will never forget. Your time and effort
made the process simple and the
program enjoyable.
Thank you for this opportunity.

- Perla
University
of Houston



UNIVERSITY

The Institut de Gestion Sociale (IGS) is one of France's most dynamic private universities. IGS consists of 10 schools and over 3,000 students, mostly French. The campus is situated in central Paris, five minutes from the Gare de l'Est train station.

KEI students study at the American Business School (ABS), a unit of IGS. ABS faculty and students come from Europe, Asia, Africa and North America. Small class size, diversity and tolerance create a learning environment for cross-cultural exchange and understanding.



ONSITE DIRECTOR

DR. DANIELE KATZ

Daniele was born in Strasbourg but has been living in Paris for many years. Daniele earned a Ph.D. in Anglophone Studies from Université de Paris III, and speaks French, German, Greek, Russian, Spanish and English. Students find Daniele to be welcoming and reliable. She enjoys hosting students at her home for dinner parties.

FIELD STUDIES

Below are the most commonly organized field trips. KEI reserves the right to change excursions for destinations of equal value.

- ✓ Paris (weekly activities)
- ✓ Versailles (day trip)
- ✓ Strasbourg (2-day excursion)
- ✓ Marseilles or Brussels (2-day excursion; semester)

HOUSING

KEI organizes housing at student residences, shared apartments and host families. Les Estudines Residence is the preferred option since it offers a community of students studying at various universities in Paris as well as amenities like internet, fitness, and laundry room. Students live in furnished studios with a private bathroom and kitchenette. If Les Estudines is not available, housing will be arranged at a different student residence or in a furnished apartment. A typical apartment consists of a living room, kitchen, bathroom and two to three double-occupancy bedrooms. Apartments are shared with other students. Students may also request a homestay. Living with a family is a great way to learn about French culture and improve French proficiency.

ACADEMICS

SEMESTER

- ✓ Maximum of 16 credits per semester
- ✓ Most courses are 3 credits
- ✓ *French Civilization* recommended

French Civilization serves as a regional studies course, which familiarizes students with French culture. Academic credit is awarded by ABS (accredited in France), and Lincoln University or State University of New York, College at Old Westbury (both accredited in the U.S.).

STUDY & WORK

The Study & Work option combines Spring and Summer terms. During Spring semester students enroll in 4 to 5 courses plus a career management workshop (in preparation for the internship) for a total of 15 to 16 credits. During the Summer students participate in a 2-month internship for 6 credits (no courses). Proficiency in French is not required, but intermediate or higher level is beneficial. Positions are available in marketing, e-commerce, finance, tourism, hospitality, and fashion and luxury retail.

COURSE OFFERINGS

Below is a partial list of ABS courses (taught in English). All courses are 3 credits unless otherwise indicated. KEI and ABS reserve the right to modify or cancel courses. Do not use this page to select courses. Visit the KEI website for the most updated course offerings and syllabi.

SEMESTER

BUSINESS & ECONOMICS

- Business Statistics
- Business Ethics

Business Administration

- Entrepreneurship
- Introduction to American Business Law
- European & International Business Law
- Law & Ethics in the Olympic Games
- International Business
- Logistics & Supply Chain Management
- Doing Business in Europe & Russia
- International Business & Development in Europe
- Doing Business in the Middle East & Africa
- Doing Business in Asia

Management

- Functions of Management & Organizational Behavior
- Human Resources Management
- Operation Management
- Management Decision Analysis
- International Corporate Governance
- Strategic Management

Finance

- Financial Accounting
- Analytical/Managerial Accounting
- Business Finance
- International Investments
- Money & Banking
- Corporate Finance
- Digital Finance
- International Finance

Marketing

- E-commerce & E-business
- Consumer Behavior
- Digital Marketing & Web Analytics
- Sports Branding & The Olympic Games
- Integrated Marketing Communication
- Marketing Research
- International Marketing
- Advanced Customer Relationship Management
- Sponsorship & Event Marketing
- Behavioral Economics
- Global & E-Marketing

Economics

- Principals of Macroeconomics
- Principals of Microeconomics
- Intermediate Microeconomics
- International Economic Analysis
- International Economics

FASHION & LUXURY GOODS MERCHANDISING

- Fashion & Textile Trends through the Ages
- Sales Techniques for Luxury Brands
- Luxury Cross Channel Marketing
- Fashion Business Revolution
- Creativity & Innovation in Fashion Luxury
- Merchandising for Luxury Retail
- Management for Luxury Services
- Creating & Developing Luxury Brand
- Strategic Brand Management

FRENCH LANGUAGE & GENERAL EDUCATION

French Language

- Elementary French (6 credits)
- Intermediate French (4 credits)
- Business French (1 credits)
- Advanced French (3 credits)

Humanities & Social Sciences

- History of Arts, Literature & Music
- Social History of American Music
- Impressionism
- 29th Century Art
- Communication Techniques/Speech
- Theatre: Acting for Business
- Analysis & Communication
- America & France: Crossroads in Civilization
- Introduction to Psychology
- Introduction to Sociology
- Intercultural Studies
- International Relations

IRELAND Dublin



OVERVIEW

ACADEMIC CONCENTRATIONS

Courses are available in the following academic and professional disciplines.

Semester & Academic Year

Arts: Music & Audio Production
Business & Economics
Communications: Journalism, Media & Advertising
Computer Science & Information Systems
Criminology, Forensics & Law
Design: Interior, Fashion & Digital
Tourism & Hospitality
Internships & Community Service

COMPREHENSIVE FEE

Semester: \$13,950 (Fall or Spring)
Academic Year: \$27,900 (Fall & Spring)

Fees are for academic year 2024-2025. Students enrolled in multiple terms receive a \$500 discount.

PROGRAM DATES

Fall Semester: mid September - mid December
Spring Semester: late January - late May



KEIabroad.org/Ireland

LOCATION

Dublin began life as a Viking settlement founded over 1,000 years ago on the banks of the river Liffey. The name “Dublin” comes from the Gaelic words “Dubh Linn” (Black River). As the political, economic and cultural center of Ireland, the city has all the amenities of a large metropolis while retaining a friendly, small town atmosphere.

Dublin is a university town with one of the youngest populations in Europe. The city is rich with culture and entertainment: museums, theater, shops, clubs, cinemas, restaurants, art galleries, historic sites, sporting venues and gardens.

Ireland was absolutely amazing! KEI did a great job making sure we were well prepared in advance and then had the outlets for support while we were there. The price was lower than any other program and it was well worth the cost! I will definitely put the word out there about the KEI program. Thanks for everything!

- Mary
Washington
State University

UNIVERSITY

Griffith College (GCD), established in 1974, is Ireland’s premier independent college. The College consists of five faculties offering undergraduate and graduate-level courses to 11,000 Irish and international students from more than 50 countries. Griffith is known for its excellent academic standards, small class sizes, focus on professional development and expert professors. The school enjoys a strong national and international reputation. Griffith College is housed on a historic 7-acre campus within Dublin city center.



ONSITE DIRECTOR

MS. OLWYN MANNIX

Olwyn is a native of Ireland. She earned an Honours degree in History and Politics from University College Dublin, and a Diploma in Law from Dublin Institute of Technology. She lived in U.S., France and Italy, and speaks English, French and Italian. Her favorite thing about Dublin are the people. "You can always have a chat, a friendly smile on a gloomy day. A general air of optimism surrounds Dubliners."

FIELD STUDIES

Below are the most commonly organized field trips. KEI reserves the right to change excursions for destinations of equal value.

- ✓ Dublin (weekly activities)
- ✓ Glendalough & Wicklow Mountains (day trip)
- ✓ Belfast (day trip)
- ✓ Galway (2-day excursion)

HOUSING

Students live on-campus at the Griffith Residence, a 20-minute walk from Dublin city center. The residence consists of flats with 24-hour security. Each furnished flat has a living area with TV, bathroom, kitchenette and 1 to 3 double bedrooms. Laundry facilities are available in the residence hall. The campus pub serves meals during the day. Students can also prepare food in their flats. Several restaurants and grocery stores are located near campus.

ACADEMICS

SEMESTER

- ✓ Maximum of 16 credits per semester
- ✓ Most courses 3 or 4 semester credits
- ✓ *Irish History & Culture* is required
- ✓ Additional courses based on interest

Irish History & Culture serves as regional studies course, which familiarizes students with Irish culture and society. Academic credit is awarded by GCD (accredited in Ireland), and Lincoln University (accredited in the U.S.).

INTERNSHIPS

Internships allow students to learn from practical experience not attainable in a classroom setting. Internships require a commitment of 120-240 hours (3-6 credits). Placement is based on professional interests and availability. KEI has relations with the World Trade Center Dublin, Magazines Ireland Ltd., Media 256, Extreme Event Ireland, Little Museum of Dublin, Innocence Project, Dermot O'Leary Gallery and Haddington International Education. Actual placement may be with a different organization. Positions are available in business, marketing, graphic design, communications, law, public relations, hospitality, humanitarian aid, photography, journalism and media.



COURSE OFFERINGS

Students select courses from the following GCD faculties (schools) and departments. Visit the KEI website to view courses and syllabi.

Faculty of Business

Accounting	International Business
Economics	Management
Entrepreneurship	Marketing
Fashion Merchandizing	Tourism & Hospitality
Finance	

Faculty of Journalism & Visual Media

Communications	Media Production
Film & TV Production	Photographic Media
Journalism	Writing for Media

Faculty of Computing Science

Computer Science	Networking & Data Com.
------------------	------------------------

Faculty of Design

Interior Design	Music Production
Fashion Design	Creative Technologies

Faculty of Law

Law & Legal Studies	Criminology
---------------------	-------------



ITALY Florence



OVERVIEW

ACADEMIC CONCENTRATIONS

Courses are available in the following academic and professional discipline during the Fall, Spring and Summer.

Arts: Photography & New Media
Design: Graphic, Interior & Product
Fashion & Jewelry Design & Merchandising
Apprenticeships in Fashion & Culinary Arts

COMPREHENSIVE FEE

Semester: \$15,950*
Academic Year: \$31,900*
Summer: \$5,950

Fees are for academic year 2024-2025. Students enrolled in multiple terms receive a \$500 discount. Apprenticeships during the semester are an additional \$1,500.

PROGRAM DATES

Fall Semester: early September - mid December
Spring Semester: early February - late June
Summer Session: early June - mid July (6 weeks)
Apprenticeship: early July - late July (4 weeks)

[KElabroad.org/italy](https://kelabroad.org/italy)

LOCATION

Florence is one of Europe's top fashion and design centers. Armani, Versace, Prada, Dolce & Gabbana, Pucci and Gucci are either head-quartered or have major design and production facilities in Florence. Florence integrates centuries of local expertise and high-end craftsmanship with technological innovation and manufacturing excellence. In addition to fashion and design, Florence is renowned for its unforgettable architecture, arts, culture and cuisine.

Studying abroad in Italy was an opportunity of a lifetime. I made great friends, attended a university that broadened my horizons in the fashion world and will be an experience that I will cherish forever.

- Megan
SUNY
Oneonta



UNIVERSITY

Accademia Italiana, founded in 1984, is one of the top design schools in Italy. Accademia's degree programs in fashion, jewelry, graphic, interior and product design, as well as photography and new media are accredited by Italy's Ministry of Education. The Florence campus has state-of-the-art facilities and located in the heart of the historic district. Accademia's faculty consists of prominent designers, artists and scholars who are working professionals in their chosen fields. It's annual Fashion Show is attended by renowned designers and leaders such as Fendi, Missoni, Cavalli, and Swarovski. Approximately 40% of the student body is Italian; 20% is American; and the remaining 40% is from around the world.



ONSITE DIRECTOR

MS. CATERINA BEMER

As a native of Florence, Caterina has intricate knowledge of the city and enjoys sharing her favorite sites with students. She especially loves jazz, theater and playing the piano. Her academic studies focused on European literature and culture, and include a year of study in England. Caterina curates the Florence activity program to ensure students experience all aspects of Florentine culture.

FIELD STUDIES

Below are the most commonly organized field trips. KEI reserves the right to change excursions for destinations of equal value.

- ✓ Florence (weekly activities)
- ✓ Milan City Tour (day trip)
- ✓ Venice (day trip; semester)

HOUSING

KEI organizes housing in apartments or student residences. A typical apartment consists of a living room, kitchen, bathroom and one to three bedrooms. Most bedrooms are double-occupancy, but some may be single and triple-occupancy. Apartments are located in central Florence and shared with other KEI and Accademia students. Students can also request to live in the CX Residence. CX offers a community of students studying at various universities in Florence as well as amenities like fitness room, lounge, and shared kitchen. Students live in furnished studios with a private bathroom. CX is located outside of the city center, and requires a 30 to 60 minute commute to Accademia Italiana via public transportation

Students are encouraged to learn how to cook Italian-style, using healthy ingredients such as tomatoes, olive oil and garlic. Grocery stores, markets, restaurants and cafes can be found throughout Florence.

ACADEMICS

SEMESTER

- ✓ Maximum of 15 credits per semester
- ✓ Courses are 3 credits each
- ✓ Apprenticeship is 3 to 6 credits
- ✓ Students can select 5 courses, or apprenticeship plus 3 to 4 courses.

SUMMER

- ✓ Maximum of 6 credits
- ✓ Students can select up to 2 courses, or apprenticeship

Academic credit for courses is awarded by Accademia Italiana (accredited in Italy). Credit for apprenticeships is awarded by Schola Firenze. Lincoln University (accredited in the USA) is KEI's university of record and will provide a program transcript if requested by the student's home university.



COURSE OFFERINGS

Accademia Italiana offers a wide range of semester courses through its academic departments. The summer program offers fewer course options. Courses are taught in English and Italian. Visit the KEI website to view courses and syllabi.

Department of Fashion Design

Fashion Design	Fashion Styling
Fashion Illustration	Textile Design
Fashion Management	Merchandizing

Department of Design

Interior Design	Graphic Design
Product Design	

Department of Communications

Communication Design	Multimedia Design
----------------------	-------------------

Department of Jewelry Design

Contemporary Jewelry Design

Department of Liberal Arts

Italian Language	Liberal Arts
Italian & Regional Studies	Studio Art

Department of Photography

Photography	Video & Sound Production
Fashion Photography	

APPRENTICESHIPS

Apprenticeships are hands-on experiences that are supervised by Master Artisans and Craftsmen. Apprenticeships are organized by Schola Firenze at exclusive brands such as Stefano Bemer, Scuola del Cuoio, Superduper, and Cibrè.

Fashion apprenticeships integrate design, technical skills (pattern-making, construction, etc.), branding, and marketing. Culinary apprenticeships integrate cooking skills, knowledge of ingredients, and restaurant management. The aim is to provide students with knowledge and skills to formulate their ideas and creativity into a final product.

Students can select from the following options. Visit the KEI website for details and syllabi.

- Custom Handmade Sneakers (Stefano Bremer)
- Bespoke Shoemaking (Stefano Bremer)
- Sustainable Leathermaking (Scuola del Cuoio)
- Bagmaking (Scuola del Cuoio)
- Handmade Hats (Superduper)
- Food Artisan @ Cibrè



OVERVIEW

ACADEMIC CONCENTRATIONS

Courses and internships are available in the following academic and professional disciplines.

Business & Economics
Communications: Journalism & Media
International Relations & Political Science
Japanese Language & Area Studies
Social Science & Humanities

COMPREHENSIVE FEE

Semester: \$14,950 (Spring or Fall)
Academic Year*: \$29,900 (Spring & Fall)

Fees are for academic year 2024-2025. Students enrolled in multiple terms receive a \$500 discount.

PROGRAM DATES

*The Japanese academic calendar starts with Spring and continues with Fall semester.**

Spring Semester: early April - early August
Fall Semester: mid September - late January

This program has an early application deadline.

[KElabroad.org/Japan](https://kelabroad.org/Japan)

LOCATION

Tokyo is Japan's economic, technical and political capital. It is a city of contrasts - futuristic skyscrapers, cutting edge technology and spirited nightlife co-exist in harmony with ancient Buddhist temples, vintage teahouses and serene gardens. Tokyo is a vibrant city with a keen flare for fashion and gastronomy, and offers many opportunities for cultural activities and entertainment.

Japan reminds me of home. The people are very nice and helpful. The KEI Director is great and has a wonderful personality. The excursions were amazing. Seeing Japan allowed me to appreciate my time here even more. This was my first experience living abroad and I enjoyed it very much.
I absolutely love Japan!

- Tyler
Eastern
Kentucky
University

UNIVERSITY

Toyo University, founded in 1887, is a comprehensive institution of higher learning consisting of 13 faculties (colleges) and 15 graduate schools spread across five campuses. In 2014, The Ministry of Education honored Toyo as an "Asian Hub University for Global Leaders."

- ✓ 32,000 students; 2,800 international
- ✓ Global faculty with focus on international education
- ✓ Intensive Japanese language and studies program
- ✓ Wide selection of courses taught in English
- ✓ Located in the heart of Tokyo





ONSITE DIRECTOR

DR. CECILIA B-IKEGUCHI

Cecilia is originally from the Philippines, but has lived in Japan for many years. Prior to joining KEI, Cecilia was a Professor at Tsukuba Gakuin University in Japan and a Visiting Professor at the University of Minnesota in the USA. Cecilia's research focuses on cross-cultural communication.

FIELD STUDIES

Below are the most commonly organized field trips. KEI reserves the right to change excursions for destinations of equal value.

- ✓ Tokyo (weekly activities)
- ✓ Asakusa, Sensoji Temple & Kaminari Gate (day trips)
- ✓ Harajuku fashion district (day trip)
- ✓ Mt. Fuji (day trip)
- ✓ Kyoto (2-day excursion)

HOUSING

Students live in Toyo's AI-House, a student residence located on the Akabanedai campus. Half of the residents are Japanese and half are international students from around the world. Rooms are single-occupancy. Bathrooms and kitchen are shared. Rooms are furnished with a desk, chair, lamp, drawers, A/C, small refrigerator, mirror, curtains, and bedding, which is changed twice per month. WiFi is available in the rooms and throughout the residence.

The AI-House Global Dining Hall serves a variety of freshly prepared Japanese, Western and Chinese dishes. Vegetarian and halal options are available. The dining hall is open for breakfast and dinner, Monday through Friday, except holidays. Meals at the AI-House Dining Hall are included in the KEI program fee.

ACADEMICS

SEMESTER

- ✓ Minimum of 7 courses to maintain full-time status in Japan
- ✓ *Japanese Culture and Society* is required
- ✓ Japanese language courses recommended
- ✓ Additional courses based on interest

Japanese Culture and Society or *Introduction to Japanology* is required and serves to familiarizes students with Japanese culture and society. This program is intended for students whose primary objective is to study Japanese language and culture. The program offers intensive language courses that will advance students through multiple levels of proficiency in one semester. A limited number of courses are offered in English and intended to complement the language courses. Students with advanced proficiency may also enrol in courses taught in Japanese.

Toyo courses are 30 to 45 learning hours; 1 to 2 Japanese credits, equivalent to 2 to 3 semester (3 to 4 quarter) credits at most universities in the USA. Students should consult with a study abroad advisor at their university/college regarding credit equivalencies and transfer.



COURSE OFFERINGS

Toyo University offers a wide range of courses at the Hakusan campus through its faculties (colleges) and departments listed below. Most courses are taught in Japanese; some courses are also taught in English.

Academic credit is awarded by Toyo University (accredited in Japan) and Lincoln University (accredited in the USA). Visit the KEI website to view courses and syllabi.

Faculty of Letters

Philosophy	History
Eastern Philosophy & Culture	Education
Japanese Literature & Culture	International Culture & Studies
English & American Literature	Educational Policies

Faculty of Economics

Economics	Policy Studies
International Economics	

Faculty of Business Administration

Business Administration	Accounting & Finance
Marketing	Entrepreneurship

Faculty of International Tourism Management

Hospitality Management	Tourism Management
------------------------	--------------------

Faculty of Law

Law & Legal Studies	Business Law
---------------------	--------------

Faculty of Sociology

Sociology	Media & Communications
Sociocultural Studies	Social Psychology
Social Welfare	

Faculty of Global & Regional Studies

Global Innovation Studies	Global Human Resources
Regional Development Studies	



KENYA NAIROBI



OVERVIEW

ACADEMIC CONCENTRATIONS

Courses and internships are available in the following academic and professional disciplines during the Fall, Spring and Summer trimester.

Business & Economics
Communications: Journalism, Media & Advertising
Computer Sciences & Information Systems
Criminology, Forensics & Law
Environment: Science, Policy & Management
Foreign Languages & Area Studies
International Relations & Political Science
Life Science & Biotechnology
Medicine, Health & Pharmacology
Psychology & Social Sciences
Tourism & Hospitality
Internships & Community Service

COMPREHENSIVE FEE

Academic Year: \$18,950 (Fall & Spring)
Fall Trimester: \$9,950
Spring Trimester: \$9,950
Summer Trimester: \$7,950

Fees are for academic year 2024-2025. Students enrolled in multiple terms receive a \$500 discount.

PROGRAM DATES

Fall Trimester: late August - mid December
Spring Trimester: early January - mid April
Summer Trimester: mid May - mid August

Kelabroad.org/Kenya

LOCATION

Nairobi is Kenya's political capital and the principal economic, diplomatic and cultural center in East Africa. Its location between Johannesburg and Cairo has attracted numerous multinational corporations, NGOs and the United Nations' African headquarters.

Nairobi is one of the most modern cities in Africa, with skyscrapers, outdoor cafes, theaters, museums and Western-style hotels. Yet, the city retains close ties with nature. Nairobi National Park is only fifteen minutes from downtown.

Kenya is a beautiful place and I would love to go back. The people in Kenya were incredibly kind. It was great meeting so many people who became my friends and traveling to so many amazing places that most Americans never dream of. I know it sounds cheesy, but there was a moment when I was sitting with friends and realized that coming to Kenya was honestly the best decision of my life.

- Julie
Santa Clara University

UNIVERSITY

United States International University (USIU) is the first and largest private, secular university in Kenya. Since its establishment in 1969, USIU has earned a reputation as the top university in East Africa. The university is dually accredited by the Commission for Higher Education of Kenya and by the Western Association of Schools and Colleges in the U.S.

USIU is located on a secure and gated 20-acre campus (photo left). The academic community consists of 3,000 students and 150 professors from 50 countries in Africa, Asia, Europe and the Americas.





ONSITE DIRECTOR

DR. PATRICK MULINDI

Patrick's warm smile and welcoming personality makes students feel comfortable in Kenya. Having joined KEI in 2004, Patrick has a lot of experience working with international students. He is also a professor of tourism and hospitality at the university. Patrick has regular office hours and is available at any hour by mobile phone.

FIELD STUDIES

Below are the most commonly organized field trips. KEI reserves the right to change excursions for destinations of equal value.

- ✓ Nairobi (weekly activities)
- ✓ Nairobi National Park (day trip)
- ✓ Bomas of Kenya (half-day trip)
- ✓ Wildlife safari (2 to 3-day excursion)
- ✓ Mombasa (2-day excursion)

HOUSING

Students live in the university residence hall. The residence is typical dormitory-style, with double rooms and a common bathroom. Each room has two beds, desks, chairs and wardrobes. Common lounges offer the opportunity to meet USIU students.

Students may purchase a 5-day meal plan for \$400 per trimester, although most students prefer to eat off-campus. The cafeteria serves Kenyan and international dishes. There are several cafes outside of campus and numerous restaurants in downtown Nairobi.

ACADEMICS

TRIMESTER (FALL, SPRING & SUMMER)

- ✓ Maximum of 15 credits per trimester; most courses are 3 credits
- ✓ *African Philosophy & Ideologies* (or similar course) required
- ✓ Additional courses, internship and service based on interests

African Philosophy & Ideologies serves as the regional studies course and examines the evolution of African societies from the pre-colonial era to the present.

INTERNSHIPS & SERVICE

Internships (for-credit) and community service (not-for-credit) allow students to learn from practical experience not attainable in a classroom setting. Internships require a minimum commitment of 120 (3 credits). Service does not have a minimum requirement. Since most internships are scheduled during the day, students may be limited to taking evening and Saturday classes.

Placement is based on professional interests and availability of positions in business, marketing, finance, communications, hospitality, journalism, environment, science, wildlife and humanitarian aid. *Nairobi has a very challenging professional culture and, as such, placement is not guaranteed. Students must select back-up courses.*



COURSE OFFERINGS

Students select courses from more than 400 offerings (taught in English) by the following USIU schools. Visit the KEI website to view courses and syllabi. Academic credit is awarded by USIU (accredited in the USA).

School of Humanities & Social Sciences

Criminal Justice	International Relations
Environment: Policy & Mgmt.	Literature
History & Regional Studies	Philosophy & Ethics
Foreign Languages	Political Science
Gender Studies	Psychology
General Education	Sociology

School of Communication, Cinematic & Creative Arts

Advertising	Creative Writing
Animation	Journalism
Broadcasting	Media Production
Cinematography & Film	Sound & Video Production

Chandaria School of Business

Accounting	Human Resources
Economics	Management
Entrepreneurship	Marketing
Finance	Tourism & Hospitality

School of Health Sciences & Pharmacology

Biology	Pharmacology
Biomedicine & Pathology	Physics
Chemistry	Public Health

School of Science & Technology

Computer Science	Information Technology
------------------	------------------------





OVERVIEW

ACADEMIC CONCENTRATIONS

Courses are available in the following academic and professional disciplines.

Semester in Lima

Business & Economics
Spanish Language & Area Studies
Tourism & Hospitality

Internship in Cuzco (Throughout the Year)

Clinical & Professional Internship

COMPREHENSIVE FEE

Semester: \$10,950 (Fall or Spring)
Academic Year: \$21,950 (Fall & Spring)
Internship: \$2,950 to \$4,950 (Depends on dates)

Fees are for academic year 2024-2025. Students enrolled in multiple terms receive a \$500 discount.

PROGRAM DATES

Lima

Fall Semester: mid August - mid December
Spring Semester: early March - mid July
Calendar Year: early March - mid December

Cuzco

Internship: Offered throughout the year
Dates are customizable

KEIabroad.org/Peru

LOCATION

Lima is the capital and economic center of Peru. The city is a melting pot of European, Andean and Asian cultures. The Historic Center is a UNESCO World Heritage Site with architecture dating back to the Inca and colonial eras. The city offers a wide array of museums, parks, theaters and restaurants.

Cuzco, the capital city of the Inca Empire, colonial administrative center and a UNESCO World Heritage site, has a deep sense of history, tradition and culture. Perched in the Andean mountains, Cuzco is the most visited city in Latin America due to its proximity to Machu Picchu and other Inca and Quechua sites.

Lima is a wonderful place for someone to live and study. USIL professors are excellent and the campus offers many opportunities to learn Spanish and engage with the local community. The KEI Program Manager and Onsite Director are amazing. The orientation was very thorough and helpful. The KEI Director is a kind person who knows everything about the city and is available when needed. Thank you.

- Jacqueline
University of
Colorado,
Denver



UNIVERSITY

Universidad San Ignacio de Loyola (USIL), founded in 1993, is an autonomous non-profit institution of higher learning. USIL offers a comprehensive curriculum taught in Spanish and English. The academic community consists of 5,000 students and faculty. The majority of students are Peruvian with a growing number from other South American, North American, Asian and European countries.



ONSITE DIRECTORS

MS. PATRICIA DONGO SORIA (LIMA)

MS. NANCY OLARTE (CUZCO)



Patricia and Nancy understand what it is like to live abroad. Both are native to Peru, but lived in other countries. Their children also attended universities or lived in different countries. They were grateful for the hospitality of local people who made them feel at home. Now they enjoy helping KEI students adapt to life in Peru.



FIELD STUDIES

Below are the most commonly organized field trips for the semester program in Lima. Field trips for the Cuzco program are organized based on student preferences. KEI reserves the right to change excursions for destinations of equal value.

- ✓ Lima (weekly activities)
- ✓ Pachacamac or Paracas Nature Reserve (day trip)
- ✓ Cuzco (2-day trip)
- ✓ Machu Picchu (2-day excursion)
- ✓ Sacred Valley (day trip)

HOUSING

Accommodations are provided in student hostels or with host families. Most hostels consist of double-occupancy bedrooms, a common room, kitchen and bathrooms, and offer laundry and Internet. Families are screened by KEI. Bedrooms are double-occupancy. Living area, kitchen and bathrooms are shared with the family. Breakfast is included with homestays.

Peru is the gastronomy center of South America. Peruvian cuisine is a combination of Spanish and native ingredients with influences from China, Italy, Africa and Japan. Restaurants and stores can be found throughout Lima and Cuzco.

ACADEMICS

SEMESTER IN LIMA

- ✓ Maximum of 15 credits per semester
- ✓ Most courses are 3 credits

INTERNSHIP IN CUZCO

- ✓ Maximum of 6 credits
- ✓ Clinical or Professional Internship

INTERNSHIPS IN CUZCO

Internships allow students to learn from practical experience not attainable in a classroom setting. Credit is awarded by KEI and Lincoln University (accredited in the USA) - 1 credit for every 40 hours of internship. Internships are available in medicine, health, business, marketing, hospitality, communications, education, social work, environment, humanitarian aid and other fields. The program fee is based on length of internship and optional add-ons such as Spanish Language classes and cultural excursions.

COURSES IN LIMA

In Lima, academic credit is awarded by USIL (accredited in Peru) and Lincoln University (accredited in the USA). Below is a sample list of courses offered in English. Courses taught in Spanish are also available. KEI and USIL reserve the right to modify courses. Do not use this page to select courses. Visit the KEI website for the most updated course offerings and syllabi.

BUSINESS & ECONOMICS

International Business

International Operations
International Human Resources
International Trade I: Imports & Exports
Global Business Strategy

Management & Administration

Project Management
Administration for Business
Quality Management
Planning & Strategic Management
Negotiation & Commercial Leadership

Marketing

Distribution of Marketing Channels
Marketing Management
B2B Industrial Marketing

Finance

Public Finances
International Finance

Economics

Monetary Theory
Global Economy
Macro-economy & Business
Microeconomics

SPANISH LANGUAGE & AREA STUDIES

Elementary Spanish
Intermediate Spanish
Advanced Spanish
Peruvian Economy
Contemporary History of Peru

TOURISM & HOSPITALITY

Strategic Management for the Hospitality Industry
Hotel Marketing
Touristic Development
Tourism Marketing Management
Marketing of Food & Beverages
Introduction to Wines
Gastronomic Tourism

GENERAL EDUCATION

International Relations & Politics

International Communications
Political Communications
Evaluation of International Cooperation Projects
International Law

Psychology & Social Science

Introduction to the Social Sciences
Human Development
Introduction to Psychotherapy
Orientation & Family Counseling

Architecture & Design

Planning & Urban Management
Exterior Photography

Engineering

Highway Engineering
Planning & Control of Operations
Transportation Engineering

Computer Science & Informatics

IT Security
Emerging Technologies

SCOTLAND Edinburgh & Galashiels



KEIabroad.org/Scotland

OVERVIEW

ACADEMIC CONCENTRATIONS

Courses and internships are available in the following academic and professional disciplines.

Semester & Academic Year

Business & Economics
Computer Science & Information Systems
Engineering & Applied Science
Fashion: Design, Styling & Merchandising
Foreign Languages & Area Studies
Life Science & Ecology
Medicine, Health & Nutrition
Physical Science & Mathematics
Psychology & Social Sciences
Sports: Science, Management & Training
Internships & Community Service

COMPREHENSIVE FEE

Semester: \$17,950 (Fall or Spring)
Academic Year: \$35,900 (Fall & Spring)

Fees are for academic year 2024-2025. Students enrolled in multiple terms receive a \$500 discount.

PROGRAM DATES

Fall Semester: early September - mid December
Spring Semester: mid January - late May

LOCATION

Edinburgh is one of Europe's most beautiful cities. From the Old Town's medieval castle to the New Town's neoclassical architecture, the city offers a constantly changing perspective. Edinburgh's buildings and monuments are interwoven with its rolling, rocky hills overlooking the sea. Amongst its many treasures are Real Mary King's Close, St. Giles Cathedral, Edinburgh Castle and the National Museum of Scotland. Edinburgh is a city of pubs, cafes and restaurants filled with writers, artists and comedians. In the words of Robert Louis Stevenson, Edinburgh is "a dream in masonry and living rock."

I had the best time of my life in Edinburgh and it was the epitome of my college experience. Excursions were great since I got to explore all over Scotland and the KEI Onsite Director was consistently helpful and attentive. Thank you KEI for making such a program affordable.

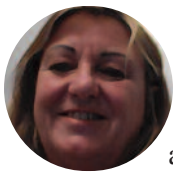
- Victoria
University of Houston



UNIVERSITY

Heriot-Watt University (HWU) is one of top ranked universities in Scotland and the United Kingdom. Established in 1821, HWU has gained a world class reputation for teaching and research. The university is highly regarded for its programs in STEM, business, fashion and other academic disciplines.

HWU is Scotland's most international university. The student body consists of 7,800 students; 30% of which are international.



ONSITE DIRECTOR

MS. JENNY MANN

Jenny was born and raised in Scotland and studied at Strathclyde University in Glasgow. Prior to joining KEI, Jenny worked as a teacher, tour guide and coordinator for a U.S. based internship program. She is excited to return to study abroad with KEI, and enjoys share her culture with students. Jenny works closely with the HWU international office to support students during the program.

FIELD STUDIES

Below are the most commonly organized field trips. KEI reserves the right to change excursions for destinations of equal value.

- ✓ Edinburgh (weekly activities)
- ✓ London (2-day excursion)
- ✓ The Highlands (day trip)

HOUSING

Students live at the university residences. Most residences are organized into suites with a shared kitchen, bathroom and single-occupancy bedrooms. Most rooms have a telephone and Internet. A coin operated laundry is available in the residence hall. Students must live on the campus where they are taking courses.

The campus offers several cafes. Edinburgh also has many restaurants, pubs and cafes. Most students take the opportunity to learn how to shop and cook regional cuisine by making their breakfast and dinner in the residence kitchen. Grocery stores and markets are in the surrounding neighborhood.

ACADEMICS

Heriot-Watt University is situated on two campuses. The Edinburgh Campus is 6 miles from the city center and houses most of the schools and departments. The Scottish Borders Campus is located in Galashiels, an hour from Edinburgh, and houses the School of Textiles & Design.

SEMESTER

- ✓ Maximum of 16 credits per semester
- ✓ Courses are 4 credits each
- ✓ Students must select courses from the same campus

Academic credit is awarded by HWU (accredited in the U.K.) and Lincoln University (accredited in the U.S.).

INTERNSHIPS

Internships allow students to learn from practical experience not attainable in a classroom setting. Internships require a commitment of 120-240 hours (3-6 credits). Placement is based on professional interests and availability. Positions are available in business, public relations, marketing, communications, hospitality, humanitarian aid, law, journalism, and media.



COURSE OFFERINGS

Students select courses from more than 500 offerings by the following HWU schools. Visit the KEI website to view courses and syllabi.

School of Business

- | | |
|------------------|-------------------------|
| Accounting | Human Resources |
| Commerce Law | International Business |
| Economics | Management |
| Entrepreneurship | Marketing |
| Finance | Supply Chain Management |

School of Engineering & Physical Sciences

- | | |
|---------------------------|----------------------|
| Chemical Engineering | Biochemistry |
| Computer Engineering | Brewing & Distilling |
| Electrical Power & Energy | Chemistry |
| Electronic Engineering | Chemical Physics |
| Energy Engineering | Physics |
| Mechanical Engineering | Mathematical Physics |
| Robotics | Science Education |

School of Energy, Geoscience, Infrastructure & Society

- | | |
|--------------------------|-------------------------|
| Biology | Property Development |
| Marine Biology | Construction Management |
| Human Health & Nutrition | Quantity Surveying |
| Exercise Science | Architecture |
| Urban Studies | Civil Engineering |
| Geography | Structural Engineering |
| Society & Environment | |

School of Mathematics & Computer Science

- | | |
|---------------------|-------------------------|
| Applied Mathematics | Computer Science |
| Actuarial Science | Software Engineering |
| Mathematics | Artificial Intelligence |
| Statistics | Information Systems |

School of Social Sciences

- | | |
|-----------------------|------------|
| Foreign Languages | Psychology |
| Intercultural Studies | Sociology |
| Political Science | |

School of Textiles & Design

- | | |
|-----------------------|----------------------------|
| Fashion Design | Fashion Marketing & Retail |
| Fashion Technology | Interior Design |
| Fashion Communication | Textile design |

SPAIN Burgos



KEIabroad.org/Spain

OVERVIEW

ACADEMIC CONCENTRATIONS

Courses and internships are available in the following academic and professional disciplines.

Semester & Academic Year

Business & Economics
Engineering & Applied Science
Physical Science & Mathematics
Spanish Language & Area Studies
Internships & Community Service

Summer

Spanish Language & Area Studies
Burgos International Music Festival
Internships & Community Service

COMPREHENSIVE FEE

Semester: \$10,950 (Fall or Spring)
Academic Year: \$21,950 (Fall & Spring)
Summer Mini: \$3,950
Summer Session: \$4,950
Summer Term: \$5,950

Fees are for academic year 2024-2025. Students enrolled in multiple terms receive a \$500 discount.

PROGRAM DATES

Fall Semester: early September - mid December
Spring Semester: mid February - mid July
Summer Mini: early June - mid June
Summer Session: early June - late June
Summer Term: early June - late July

LOCATION

Burgos is a historic and vibrant city in northern Spain on El Camino de Santiago. Founded in the 9th century, Burgos was the capital of the Kingdom of Castile and considered to be the origin of modern Spanish. Among its landmarks are the Burgos Castle and Cathedral, and Casa del Cordón, where Ferdinand and Isabella met with Christopher Columbus after his journey to the New World. Modern day Burgos is a cosmopolitan city with a remarkable cultural life. The medieval city center preserves its heritage while offering modern conveniences, entertainment and culinary options.

This program opened my horizons as a scholar and broadened my perspective as an African-American. I'll remember the experiences, people and most importantly the knowledge that I acquired while studying in Burgos. KEI has been a life altering experience and I'm happy that KEI accepted me into this wonderful program.

- Brian
Florida A&M
University

UNIVERSITY

University of Burgos (UBU) traces its origin to 1195 as Hospital del Rey, which was used by pilgrims on El Camino de Santiago. The university combines ancient heritage with modern facilities, and offers a wide range of programs to more than 10,000 students.

Program participants take major-specific courses at UBU, and Spanish language courses at Escuela de Espanol (EDE). EDE is the first and largest language school in Burgos, offering tailored programs to meet the needs of individuals and small groups.





ONSITE DIRECTORS

MR. RICARDO PORRES ORTEGA

Ricardo is a native of Burgos and has extensive knowledge of the city. In addition to serving as the KEI Director, he manages Escuela de Espanol. Prior to opening EDE, he was a lecturer at the University of Burgos for many years. Ricardo works closely with a Program Assistant to support students during the program. His experience working with international students and his warm personality are an asset to the program.

FIELD STUDIES

Below are the most commonly organized field trips. KEI reserves the right to change excursions for destinations of equal value.

- ✓ Burgos city tour (weekly activities)
- ✓ Royal Monastery of Las Huelgas (day trip)
- ✓ Bilbao & San Sebastian (2-day excursion)
- ✓ Madrid & Toledo (2-day excursion; semester)

HOUSING & MEALS

Students live in Residencia Universitaria located in the city center. The residence hall consist of a study area, lounges, recreational areas, student cafeteria and bedrooms. Most rooms are double-occupancy and shared with Spanish and international students. A meal plan at the cafeteria is included with the program fee.

Students may also request a homestay with meals. Living with a family is great way to improve Spanish proficiency and learn the customs.

ACADEMICS

SEMESTER

- ✓ Maximum of 18 credits per semester
- ✓ Most courses are 3-4 credits; Internships are 3-6 credits
- ✓ *Spanish Society & Culture* required
- ✓ *Spanish Language* strongly recommended

SUMMER MINI, SESSION & TERM

- ✓ *Spanish Society & Culture* (Mini, Session & Term)
- ✓ *Spanish Language* (Session & Term only)
- ✓ Internship (Term only)

Spanish Society & Culture serves as the regional studies course, which will familiarize students with Spain.

INTERNSHIPS & SERVICE

Internships (3-6 credits) and community service (not-for-credit) allow students to learn from practical experience not attainable in a classroom setting. Internships require a commitment of 120-240 hours. Positions are available in business, health and public service. Sample organizations include Museum of Human Evolution, Burgos Chamber of Commerce, Fabricados Histrón S.L., Burgos Acoge NGO, Softeca, Hotel Almirante Bonifaz and Hospital Universitario de Burgos. Actual placement may be with a different organization.



COURSE OFFERINGS

Courses are taught at Escuela de Espanol (EDE) and University of Burgos (UBU). EDE offers Spanish language courses that are taught in small classes using the immersion method. UBU offers courses in a wide range of subjects. Most courses are taught in Spanish, some are taught in English, and others are taught in Spanish with English support (i.e. "English-friendly"). Academic credit is awarded by Lincoln University (accredited in the USA). Visit the KEI website to view courses and syllabi.

EDE Escuela de Espanol

Course offerings in Spanish and English.

Spanish Society & Culture	Heritage Speakers (Tutorial)
Spanish Language (all levels)	Business Spanish (Tutorial)
Grammar Review (Tutorial)	Spanish for STEM (Tutorial)

UBU Faculty of Economics & Business

Course offerings in Spanish, English and English-friendly.

Accounting	Finance
Business Administration	International Business
Economics	Marketing

UBU School of Labor Relations

Course offerings in Spanish only.

Labour Relations	Human Resources
------------------	-----------------

UBU Faculty of Humanities & Education

Course offerings in Spanish and English-friendly.

Computer Science	Spanish Literature
Political Science	Spanish History
Public Management	Spanish Culture

UBU Faculty of Health Sciences

Course offerings in Spanish and English-friendly.

Nursing	Occupational Therapy
---------	----------------------

UBU Faculty of Sciences

Course offerings in Spanish and English-friendly.

Chemistry	Food Science & Tech.
-----------	----------------------

UBU Polytechnic School

Course offerings in Spanish, English and English-friendly.

Agro & Rural Engineering	Electronics Engineering
Civil Engineering	Industrial Engineering
Computer Engineering	Mechanical Engineering

UBU Faculty of Law

Course offerings in Spanish, English and English-friendly.

Law	Criminal Justice
-----	------------------



THAILAND Bangkok/Salaya

OVERVIEW

ACADEMIC CONCENTRATIONS

Courses and internships are available in the following academic disciplines.

Trimester & Academic Year

Arts: Design, Visual & Performance
 Business & Economics
 Communications: Media & Film
 Computer Science & Information Systems
 Environment: Science, Policy & Management
 International Relations & Political Science
 Life Science & Ecology
 Medicine, Health & Nutrition
 Physical Science & Mathematics
 Psychology & Social Sciences
 Thai Language & Area Studies
 Tourism & Hospitality

COMPREHENSIVE FEE

Trimester: \$9,950 (Fall, Winter or Spring)
 Academic Year: \$28,900 (Fall, Winter & Spring)

Fees are for academic year 2024-2025. Students enrolled in multiple terms receive a \$500 discount.

PROGRAM DATES

Fall Trimester: early September - mid December
 Winter Trimester: early January - early April
 Spring Trimester: mid April - late July
 Summer: early - late July



KElabroad.org/Thailand

LOCATION

Bangkok is the political, cultural, economic, educational, geographic and spiritual capital of Thailand. Bangkok also serves as the financial, transportation and communications hub for Southeast Asia, and as headquarters for numerous multinational companies, NGOs and humanitarian organizations. Contrasts between tradition and modernity are abound: modern skyscrapers next to ancient golden temples, barefoot monks walking streets with neon signs and pulsating rock music. Bangkok's expansion reflects the entrepreneurial spirit, rich cultural ambience and generosity of the Thai people.

Thailand was an amazing, eye-opening experience that has changed my life permanently. I learned so much about myself and the world. The international office is exemplary; they are so friendly and helpful. A big thanks to KEI for my study abroad. Thank you for a life changing seven months. I loved the experience and I will recommend KEI to all my friends.

- Richard
 Harvey Mudd
 College

UNIVERSITY

Mahidol University (MU) is the oldest institution of higher learning in Thailand. Founded in 1889 as a medical school, MU has since developed into the most prestigious university in Thailand, internationally recognized for its high-caliber curriculum, research and international collaborations. MU faculty and alumni have been recipients of numerous and international awards.

- ✓ 5,600 professors and researchers
- ✓ 32,000 students; 1,800 international students from 45 countries



ONSITE DIRECTOR

MS. MARISA VINITKETHKUMNUAN

Marisa was born in the U.S., but moved to Thailand at a young age. She earned a BA and an MA from Chiang Mai University and worked at Stamford International University in Student Life prior to joining KEI. Marisa enjoys working with students and looks forward to helping students make the most of their time in Thailand.

FIELD STUDIES

Below are the most commonly organized field trips. KEI reserves the right to change excursions for destinations of equal value.

- ✓ Bangkok (weekly activities)
- ✓ Dan Wai Floating Market (day trip)
- ✓ Ayutthaya (day trip)
- ✓ Ko-Samet Island (2-day excursion)
- ✓ Chiang Mai, Chiang Rai & N. Thailand (3 to 4-day excursion)

HOUSING

Students stay at the Bundit House, a student residence near the campus. Bundit offers convenient amenities such as internet, laundry room, air-conditioning, roof-top deck, swimming pool, fitness room and cafe. Bedrooms are double-occupancy with bathroom.

The University offers several cafeterias and cafes. There are also many restaurants and stores near campus and in Bangkok. Food in Thailand is relatively inexpensive.

ACADEMICS

TRIMESTER

- ✓ Maximum of 5 courses per trimester
- ✓ Most courses are 4-5 quarter credits (3-4 semester credits)
- ✓ *Introduction to Thai Language & Culture* required
- ✓ Additional courses, internships and service based on interest

Introduction to Thai Language & Culture serves as a regional studies course, which familiarizes students with Thai language and society.

INTERNSHIPS & SERVICE

Internships (for-credit) and community service (not-for-credit) allow students to learn from practical experience not attainable in a classroom setting. Internships require a commitment of 120-240 hours (3-6 credits). Service does not have a minimum requirement. Placement is based on availability and professional interests. Previous placements include Amnesty International, Bangkok Marriott, Jubilee Hospital, Chitlada Palace Projects and Produce. Actual placement may be with a different organization. Positions are available in the following fields:

Business	Marketing	Finance
Hospitality	Humanitarian Aid	Education
Communications	Information Systems	Social Work



COURSE OFFERINGS

More than 300 courses (taught in English) are offered by the following MUIC units. Visit the KEI website to view courses and syllabi. Academic credit is awarded by MUIC (accredited in Thailand) and Lincoln University (accredited in the USA).

Business & Economics

Accounting	Human Resources
Economics	International Business
Entrepreneurship	Management
Finance	Marketing

Communication & Media Arts

Acting & Directing	Entertainment Media
Advertising	Film Production
Animation Production	TV Production
Communication Design	

Computational Sciences

Applied Mathematics	Software Engineering
Computer Science	Statistics
Information Systems	

Environment

Environmental Science	Environmental Science
Environmental Mngmt.	

Health & Nutrition

Biomedicine	Health Education
Exercise Science	Physical Education
Food Science	Public Health
Food Technology	

Humanities

English Studies	Philosophy
Foreign Languages	Southeast Asian Studies
History	Thai Language
International Studies	Thai Studies

Natural Science

Biology	Chemistry
Ecology	Physics

Social Sciences

International Relations	Psychology
Intercultural Studies	Sociology
Political Science	

Travel Industry Management

Eco-tourism	Hospitality Management
Event Management	Tourism Management

UNITED ARAB EMIRATES

Ρας AlKhaimah



OVERVIEW

ACADEMIC CONCENTRATIONS

Courses and internships are available in the following academic and professional disciplines.

Semester & Academic Year

Arabic Language & Middle Eastern Studies
Arts: Architecture & Design
Business & Economics
Communications: Journalism & Public Relations
Computer Science & Information Systems
Engineering & Applied Science
Life Science & Biotechnology
Physical Science & Mathematics
Internships & Community Service

COMPREHENSIVE FEE

Semester: \$15,950 (Fall or Spring)
Academic Year: \$31,950 (Fall & Spring)

Fees are for academic year 2024-2025. Students enrolled in multiple terms receive a \$500 discount.

PROGRAM DATES

Fall Semester: late August - mid December
Spring Semester: mid January - late May

KElabroad.org/UAE

LOCATION

Ras Al Khaimah (RAK) was once the historical capital of the region. Translated literally from Arabic to English, 'Ras Al Khaimah' means 'Head of the Tent'. The beauty of RAK is reflected in its traditions, historic sites and diverse landscapes. Located at the mouth of the Gulf, only an hour drive from Dubai, RAK is an ideal location for students who want to be immersed in traditional Arabic culture yet have easy access to modern Dubai, white sandy beaches, majestic Hajar Mountains, expansive desert and rolling sand dunes.

**My study abroad was nothing but amazing!
The staff and students took me in like family.
AURAK will always be a second home to me,
and a school that I would recommend to
anyway who is looks to study in the UAE.**

- Rushod
Lincoln
University

UNIVERSITY

The American University of Ras Al Khaimah (AURAK) is a public institution accredited by the UAE Ministry of Higher Education and Scientific Research. AURAK utilizes an American model of liberal arts education with academic programs in Arabic language and Gulf studies, business, communications, sciences and engineering.

AURAK is a co-educational university; female and male students are in classes together. More than 25% of the student body consists of Emiratis, a very high percentage considering that Emirati citizens account for only 30% of the country's population. The majority of students come from other Arabic countries and Africa with a growing number from Asia, Europe and North America.





ONSITE DIRECTOR

DR. ADEL AMER

Dr. Amer had a storied career prior to joining KEI - first as a media personality in Egypt then as a Professor of Arabic at the University of Georgia. During his tenure at UGA, Adel served on KEI's Arabic Steering Committee, which was instrumental in developing the KEI program in the UAE. Students will find Adel to be very knowledgeable, resourceful, and caring.

FIELD STUDIES

Below are the most commonly organized field trips. KEI reserves the right to change excursions for destinations of equal value.

- ✓ Ras Al-Khaimah (weekly activities)
- ✓ Dubai (day activity)
- ✓ Abu Dhabi (day activity)
- ✓ Oman coast (2-day excursion)
- ✓ Bedouin Camp & Dinner (2-day excursion)

HOUSING

Students live on campus at the EDRAK residence hall. Rooms are double occupancy with en-suite bathroom and balcony. The residence hall has a common TV room, study room, laundry facility and WiFi Internet.

The Al Maraya restaurant on campus offers daily specials along with set items such as pizza and salads. Students can eat in the Al Maraya or have food delivered to their residence hall. Many Arabic and Indian restaurants as well as familiar franchises such as Subway, McDonalds and KFC also deliver to campus.

ACADEMICS

SEMESTER

- ✓ Maximum of 18 credits per semester
- ✓ Most courses are 3 semester credits; courses with lab are 4 credits
- ✓ *Arabic Language* is strongly recommended
- ✓ Middle East/Gulf Studies course recommended

Academic credit is awarded by AURAK, which is accredited in the UAE by the Ministry of Education and in the USA by SACS. AURAK's business school is a member of AACSB and its engineering programs are accredited by ABET.

INTERNSHIPS & SERVICE

Internships (for-credit) and community service (not-for-credit) allow students to learn from practical experience not attainable in a classroom setting. Internships require a commitment of 120-240 hours (3-6 credits). Service does not have a minimum requirement. Placement is based on professional interests. Positions are available in business, marketing, finance, communications, public relations, teaching English, computer science, engineering and community engagement.



COURSE OFFERINGS

More than 300 courses (taught in English) are offered by the following AURAK schools. Visit the KEI website to view courses and syllabi.

Arts & Sciences

Arabic Language
Biotechnology
Biochemistry
Biology
Chemistry
Genetics

Islamic & Gulf Studies
Physics
Mass Communications
Mathematics
Social Sciences

Business

Accounting
Economics
Entrepreneurship
Finance

Human Resources
International Business
Management
Marketing

Engineering

Architecture
Artificial Intelligence
Construction
Civil Engineering
Infrastructure Engineering
Interior Design
Computer Engineering

Computer Science
Electrical Engineering
Electronics Engineering
Industrial Engineering
Mechanical Engineering
Petroleum Engineering



APPLICATION

KEIABROAD.ORG/APPLY-NOW/



APPLICATION CHECKLIST

- ☐ Completed online application
- ☐ Personal statement
- ☐ Official transcript
- ☐ Passport-sized photo (2" x 2")
- ☐ \$100 Application fee
- ☐ Recommendation
- ☐ Copy of passport (if available)
- ☐ Internship statement (if participating in an internship)
- ☐ Resume or CV (if participating in an internship)
- ☐ Travel Grant essay (optional)

Visit www.KEIabroad.org/apply-now/ for a detailed explanation of requirements and to start your application.

APPLICATION DEADLINES

Most programs have the following deadlines:

Fall & Academic Year:	May 10
Winter Trimester:	October 10
Spring & Calendar Year:	November 10
Summer:	March 10

Application deadlines for programs in Tokyo, Japan and programs in London, England that include internships have earlier deadlines. Visit KEIabroad.org/apply-now/ for detailed information.

Late applications will be considered if space is available. A \$150 late fee may be charged, depending on circumstances.

ADMISSIONS

Admission decisions are based on the applicant's GPA, Personal Statement and Letter of Reference. KEI also considers how closely the selected program matches the applicant's needs and goals. A minimum GPA of 2.5 on a 4.0 scale is required for most programs. A GPA of 2.8 is required for Japan and Scotland. A GPA below the minimum requirement may be considered on a case by case basis.

Applications are reviewed on a rolling basis. Completed applications take approximately one week to review. Admission decisions are sent to students via email.

ENROLLMENT

To enroll in the program, submit the completed KEI enrollment documents with a \$500 deposit before the enrollment deadline. The enrollment deadline is usually 2 weeks after the admissions date. The deposit is refunded after students return from the program. The cost of damages, if any, is deducted from the refund. More than 99% of program participants are eligible for a full refund.

EARLY ENROLLMENT

Students who enroll before the application deadline receive credit of \$100 toward the program fee. Students who enroll early also benefit by being the first to pre-register for courses and internships.

KEI program participants come from more than 350 universities and colleges. And the list is growing. Institutions listed in bold are affiliated or have special status with KEI. *Can't find your university? Don't worry. You may be the first to study abroad with KEI from your school. Our friendly staff will help you through the entire process.*

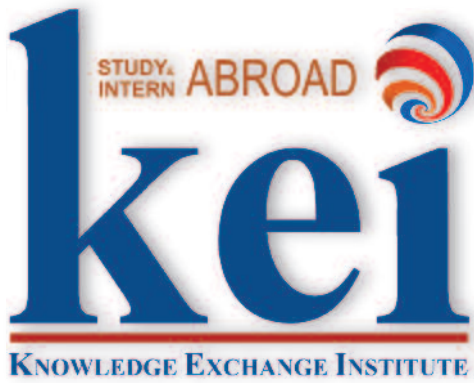
SENDING INSTITUTIONS

Agnes Scott College
Alabama A&M University
Alcorn State University
Arcadia University
Auburn University
Augsburg University
Augustana College
Azusa Pacific University
Ball State University
Barnard College
Barry University
Baruch College
Beloit College
Bennington College
Berea College
Bethany College
Bethune-Cookman University
Bishop State Community College
Bluefield State College
Boston College
Boston University
Bowling Green State University
Brevard College
Bridgewater State University
Brooklyn College
California State Polytechnic – Pomona
California State Polytechnic – San Luis Obispo
California State University – Channel Islands
California State University – Chico
California State University – Dominguez Hills
California State University – Fullerton
California State University – Long Beach
California State University – Northridge
California State University – San Marcos
California State University – Stanislaus
Campbellsville University
Capital University
Carnegie Mellon University
Carthage College
Case Western Reserve University
Central Michigan University
Central Washington University
Christopher Newport University
Citadel; Military College of South Carolina
Clark Atlanta University
Clemson University
Cleveland State University
Coker College
College of Charleston
College of New Jersey
College of Southern Nevada
College of William & Mary
College of Wooster
Colorado Christian University
Colorado State University
Columbia College Chicago
Columbia University
Concord University
Concordia University Irvine
Cooper Union
Cornell University
County College of Morris
Dakota State College
Dalton State College
Davis & Elkins College
DePaul University
DeVry University
Dickinson State University
Dillard University
Dixie State University
Dominican University of California
Drexel University
Duquesne University
Durham University
East Carolina University
Eastern Connecticut State University
Eastern Kentucky University
Eastern Michigan University
Eastern Oregon University
Eastern Washington University
Embry–Riddle Aeronautical University
Emerson College
Emmanuel College
Emory & Henry College
Evergreen State College
Fairleigh Dickinson University
Fairmont State University
Ferris State University

Flagler College
Florida A&M University
Florida Atlantic University
Florida Gulf Coast University
Florida International University
Florida Memorial University
Frostburg State University
George Mason University
George Washington University
Georgetown College
Georgetown University
Georgia Gwinnett College
Georgia State University
Glenville State College
Gonzaga University
Goucher College
Grand Valley State University
Guilford College
Hampshire College
Hampton University
Harper College
Harvard University
Harvey Mudd College
Hawaii Pacific University
Hofstra University
Houston Community College
Howard University
Hunter College
Illinois Institute of Technology
Indiana University Bloomington
Ithaca College
Jackson State University
James Madison University
John Jay College of Criminal Justice
Kennesaw State University
Kent State University
Kentucky State University
Kenyon College
King's College
King University
La Salle University
La Sierra University
Lewis & Clark College
Lincoln University
Lindsey Wilson College
Long Beach City College
Long Island University
Louisiana State University
Luther College
Macalester College
Manhattan College
Marietta College
Marist College
Marquette University
Marshall University
Marygrove College
Massachusetts College of Art & Design
Mercyhurst University
Meredith College
Metropolitan State University of Denver
Miami University
Middle Tennessee State University
Millersville University of Pennsylvania
Minnesota State University – Mankato
Minnesota State University – Moorhead
Mississippi Valley State University
Missouri Southern State University
Missouri State University
Montclair State University
Moravian College
Morhouse College
Morgan State University
New College of Florida
New Mexico State University
New Mexico Inst. of Mining & Tech.
New York City College of Tech., CUNY
New York University
Norfolk State University
North Carolina A&T State University
North Carolina Central University
North Carolina State University
North Hennepin Community College
Northern Arizona University
Northern Kentucky University
Northern Michigan University
Northern Vermont University
Northwest Christian University
Northwest Missouri State University

Northwestern University
Oakland University
Ohio Dominican University
Ohio Wesleyan University
Ohio University
Ohio Northern University
Oklahoma State University
Ohio Dominican University
Oregon State University
Otterbein University
Pace University
Pennsylvania State University
Plymouth State University
Point Loma Nazarene University
Presbyterian College
Prairie View A&M University
Providence College
Queens College, CUNY
Rhodes College
Rice University
Rider University
Rollins College
Rose-Hulman Institute of Technology
Rosemont College
Rutgers University
Saginaw Valley State University
Saint Xavier University
Salisbury University
Salve Regina University
Sam Houston State University
Samford University
San Diego Mesa College
San Diego State University
San Francisco State University
Santa Clara University
Santa Monica College
Seattle Pacific University
Seattle University
Seton Hall University
Shepherd University
Skidmore College
Smith College
Sonoma State University
South Dakota School of Mines & Technology
Southern Methodist University
Southern Utah University
Spelman College
St. Francis College
State University of New York – Albany
State University of New York – Binghamton
State University of New York – Brockport
State University of New York – Buffalo
State University of New York – Buffalo State
State University of New York – Canton
State University of New York – Cortland
State University of New York – Fredonia
State University of New York – New Paltz
State University of New York – Old Westbury
State University of New York – Oneonta
State University of New York – Plattsburgh
State University of New York – Purchase
State University of New York – Stony Brook
Stephen F. Austin State University
Stetson University
Suffolk University
Syracuse University
Tarleton State University
Temple University
Tennessee Technological University
Texas A&M University
Texas A&M University – Kingsville
Texas Southern University
Texas State University
Tougaloo College
Touro College
Trinity Washington University
Troy University
Truman State University
Tusculum College
Union College
University of Akron
University of Alabama – Birmingham
University of Alabama – Huntsville
University of Alaska – Fairbanks
University of California – Berkeley
University of California – Davis
University of California – Irvine
University of California – Los Angeles

University of California – Merced
University of California – Riverside
University of California – San Diego
University of California – Santa Barbara
University of California – Santa Cruz
University of Central Florida
University of Charleston
University of Chicago
University of Cincinnati
University of Colorado – Colorado Springs
University of Colorado – Denver
University of Connecticut
University of Dayton
University of Delaware
University of Denver
University of Georgia
University of Hartford
University of Houston
University of Houston – Clear Lake
University of Houston – Downtown
University of Illinois – Chicago
University of Indianapolis
University of Iowa
University of Kentucky
University of Louisville
University of Mary Washington
University of Maryland – College Park
University of Maryland – Eastern Shore
University of Massachusetts – Amherst
University of Massachusetts – Boston
University of Miami
University of Michigan
University of Nebraska – Lincoln
University of New Mexico
University of North Carolina – Charlotte
University of North Dakota
University of North Florida
University of North Texas
University of Northern Colorado
University of Pikeville
University of Pittsburgh
University of Puerto Rico
University of Redlands
University of Saint Joseph
University of South Alabama
University of South Carolina
University of South Florida
University of Southern Indiana
University of St. Thomas
University of Tennessee – Chattanooga
University of Tennessee – Knoxville
University of Texas – Austin
University of Texas – Dallas
University of Texas – Pan American
University of Vermont
University of Virginia
University of Washington
University of West Florida
University of Wisconsin – Madison
University of Wisconsin – Stevens Point
University of Wyoming
Valencia College
Virginia Commonwealth University
Virginia State University
Virginia Institute of Technology
Virginia Union University
Virginia Wesleyan University
Viterbo University
Washington State University
Washington University in St. Louis
Wayne State University
West Liberty University
West Virginia State University
West Virginia University
West Virginia University – Beckley
West Virginia University – Parkersburg
West Virginia University – Potomac State
West Virginia Wesleyan College
Western Carolina University
Western Michigan University
Western Colorado University
Western Washington University
William Woods University
Winona State University
Winthrop University
Worcester State University
Xavier University of Louisiana
Youngstown State University



Knowledge Exchange Institute
 48 Broadway, Suite 2
 Haverstraw, NY 10927

T: 800.831.5095
F: 212.528.2095

info@KEIabroad.org
www.KEIabroad.org

facebook.com/KEIabroad
twitter.com/KEIabroad



Area Studies
 Biology & Life Science
 Business
 Chemistry
 Communication
 Computer Science
 Criminology
 Design
 Ecology & Earth Science
 Economics

Education
 Engineering
 Environment
 Fashion
 Film & Media
 Finance & Accounting
 Foreign Languages
 Forensics
 General Education
 Health & Nutrition

History
 Humanitarian Aid
 Information Systems
 International Relations
 Journalism & Media
 Law & Legal Studies
 Literature & Writing
 Marketing & Advertising
 Mathematics
 Music

Physics
 Political Science
 Pre-Medicine
 Psychology
 Religion & Philosophy
 Sociology
 Sports & Recreation
 Theater
 Tourism & Hospitality
 Visual Arts